



10 Sidney Street  
Cleethorpes, Lincolnshire, DN35 7NQ

Offers in excess of  
£55,000

## 2 Bedroom End Of Terrace House

- Freehold
- End Terrace Property
- 2 Bedrooms
- Cleethorpes Location
- No Forward Chain
- Ideal Investment Opportunity
- Allocated Parking Space
- Viewing Essential
- EPC Rating - C, Council Tax Band - A

[Click here to access the Energy Performance Certificate for 10 Sidney Street, Cleethorpes, Lincolnshire, DN35 7NQ](#)



## Overview

Pygott & Crone are pleased to bring to the market this two bedroom end of terrace property located in Cleethorpes, offering excellent potential for improvement. Requiring modernisation throughout, this home presents an ideal investment opportunity or project for buyers looking to add value.

Internal accommodation briefly comprises: Lounge and Kitchen. Upstairs are 2 Bedrooms and Bathroom. There is low maintenance private garden to the rear.

Offered for sale with no forward chain, this property allows for a straightforward purchase process. Early viewing is recommended to appreciate the scope and potential on offer.



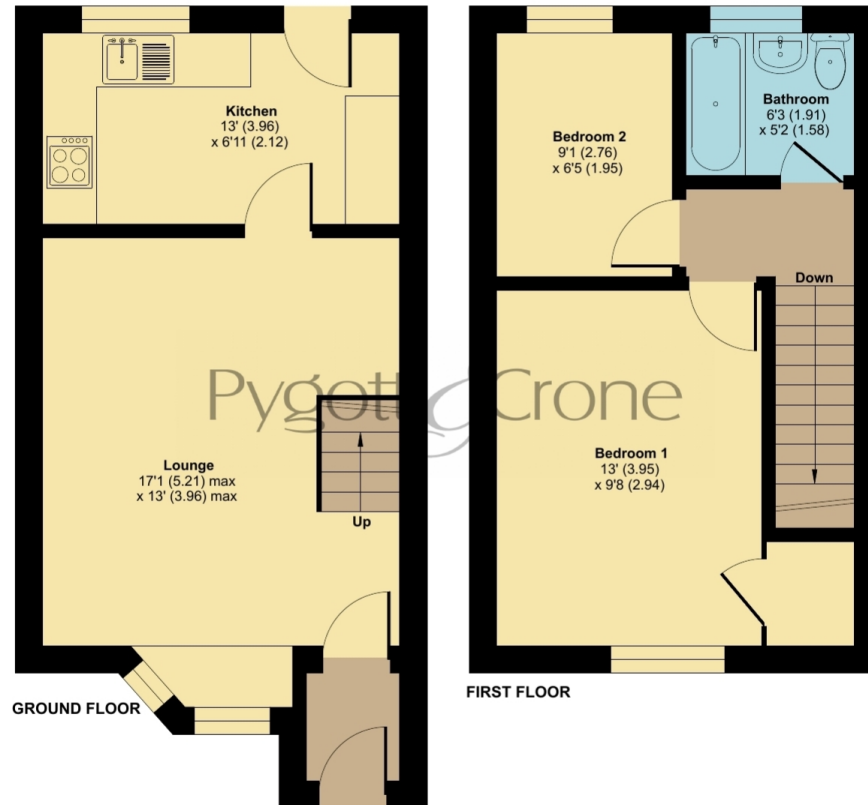





## Sidney Street, Cleethorpes, DN35

Approximate Area = 609 sq ft / 56.5 sq m

For identification only - Not to scale



 Floor plan produced in accordance with RICS Property Measurement 2nd Edition, Incorporating International Property Measurement Standards (IPMS2 Residential). © nchecom 2026. Produced for Pygott & Crone. REF: 1456098



10 Sidney Street, Cleethorpes, Lincolnshire, DN35 7NQ

## Location



Show on Google: [schools](#), [doctors](#), [supermarkets](#), [restaurants](#), [railway stations](#)



**Stonebow**  
Financial Services Ltd

### Do you need Financial Help or Advice?

We are offering free advice through Mortgage Advice Bureau. If you would like to discuss your finances or mortgage, we'll arrange for a qualified adviser to call you back at a convenient time.



**Dave Jolley**  
Mortgage & Protection Adviser

0330 912 0007

Your home may be repossessed if you do not keep up repayments on your mortgage.

There may be a fee for mortgage advice. The actual amount you pay will depend upon your circumstances. The fee is up to 1% but a typical fee is 0.3% of the amount borrowed.

Houses. Homes. Harmony.



10 Sidney Street, Cleethorpes  
is on the market with our Grimsby branch

---

22 South St Mary's Gate, Grimsby DN31 1LQ

01472 264960