



Building 1, Kingsley Office Park
Runcorn Road, Lincoln, Lincolnshire, LN6 3TA

£26,375 pa

Details

- Offices To Let
- 2,110 sqft
- Popular location close to A46 bypass
- The A1 is 20 minutes drive away
- High Specification
- Allocated parking
- Ground Floor
- Excellent Location





Location



Overview

An excellent opportunity to take a lease on the high quality ground floor office space of a high specification complete with feature entrance, landscaping and infrastructure. The premises comprise a modern detached pavilion style office building within this well established park.



Location

Kingsley Business Park enjoys an ideal location in the heart of the business district on the south wester outskirts of Lincoln known as Lincoln Fields. The business park benefits from its close proximity to the A46 Bypass. The A1 and the Northern Train mainline to Kings Cross London are 20 minutes drive away

ACCOMMODATION

The property comprises 2110 sqft (196.02 sqm)

Shared entrance porch

Shared WC and kitchen facilities

Parking for 5

PLANNING

The property has established office use

SERVICES

Mains electricity, water and drainage are connected



TENURE

The property is available on a minimum 3 year lease subject to a 3 month rental deposit and on full repairing insuring terms. The property is subject to a service charge

RATEABLE VALUE

£20,750 Rateable value

CEPC

CEPC Rating of C

LEGAL COSTS

Each party pay their own legal costs

VAT

LOCAL AUTHORITY

North Kesteven District Council

Tel 01529 414155



VIEWINGS

Contact Joint agents

Pygott & Crone Commercial 01522 536777

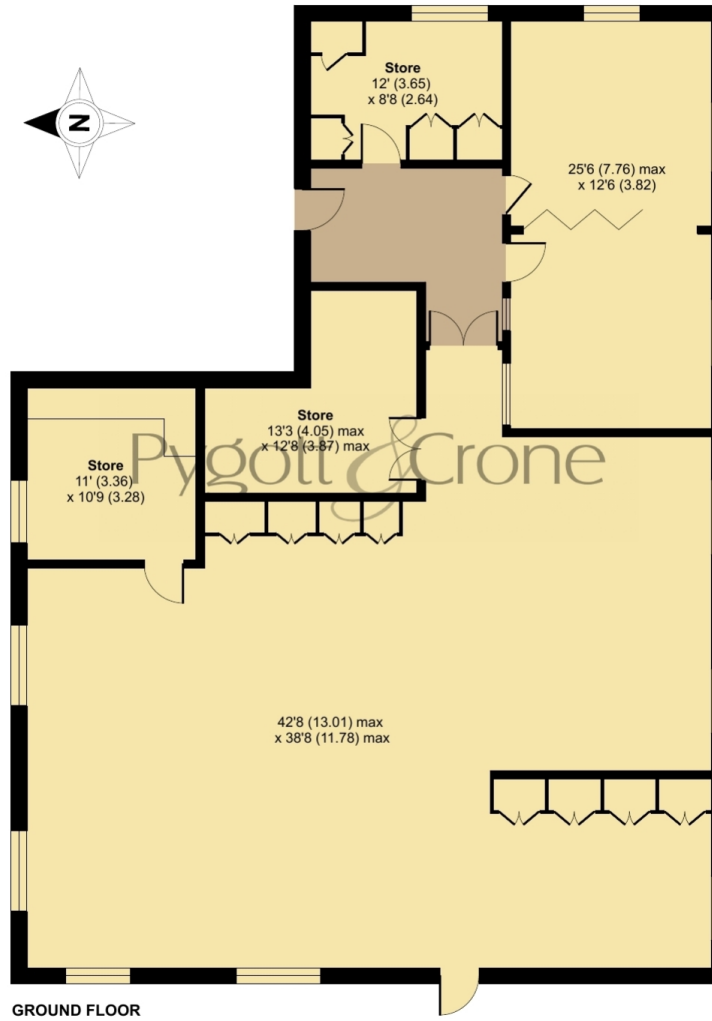
Lambert Smith Hampton 01522 814663



Kingsley Office Park, Runcorn Road, Lincoln, LN6

Ground Floor Net Internal Area = 2120 sq ft / 196.9 sq m

For identification only - Not to scale



Floor plan produced in accordance with RICS Property Measurement 2nd Edition, Incorporating International Property Measurement Standards (IPMS3 Commercial). © nlcocom 2026. Produced for Pygott & Crone. REF: 1446898



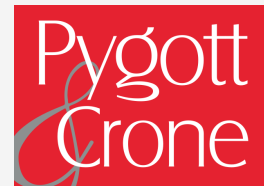
Building 1, Kingsley Office Park, Runcorn Road, Lincoln, Lincolnshire, LN6 3TA



Building 1, Kingsley Office Park, Runcorn Road, Lincoln, Lincolnshire, LN6 3TA



Building 1, Kingsley Office Park, Runcorn Road, Lincoln, Lincolnshire, LN6 3TA



Building 1, Kingsley Office Park, Runcorn Road
is marketed through our Commercial office

36a Silver Street, Lincoln, LN2 1EW

0330 128 0939