



2 Maple Grove
Heckington, Sleaford, Lincolnshire, NG34 9WB

£280,000

3 Bedroom Detached Bungalow

- Freehold
- Extensively updated and beautifully presented throughout
- Detached three-bedroom bungalow on a generous plot
- Spacious lounge and modern kitchen diner
- Three versatile bedrooms
- Stylish contemporary shower room
- Private enclosed rear garden with summer house
- Driveway parking and attached garage
- Popular Heckington location close to village amenities and railway station
- EPC Rating - D, Council Tax Band - B

[Click here to access the Energy Performance Certificate for 2 Maple Grove, Heckington, Sleaford, Lincolnshire, NG34 9WB](#)



Overview

Occupying a generous plot within one of Heckington's most sought-after residential locations, this beautifully presented three-bedroom detached bungalow has been extensively updated and improved by the current owners to create a stylish and contemporary home ready for immediate occupation.

The accommodation has been thoughtfully enhanced throughout and offers bright, spacious living space ideally suited to a wide range of buyers. A welcoming entrance hall leads to a generous lounge, perfect for both relaxing and entertaining, while the modernised kitchen diner provides an attractive and practical hub of the home.



There are three well-proportioned bedrooms, offering flexibility for family living, guests or home working, together with a stylishly appointed shower room finished to a high standard.

Externally, the property continues to impress. Positioned on a corner plot, the bungalow enjoys attractive, well-maintained gardens designed for ease of maintenance whilst still providing excellent outdoor space. The enclosed rear garden offers a private retreat with a superb summer house, ideal for hobbies, entertaining or simply enjoying the peaceful surroundings. A driveway provides ample off-road parking and leads to an attached garage.

Located within easy reach of Heckington's excellent range of amenities, including shops, medical facilities, schools and a railway station, this exceptional bungalow offers the perfect blend of village living, modern comfort and convenience.





Maple Grove, Heckington, Sleaford, NG34

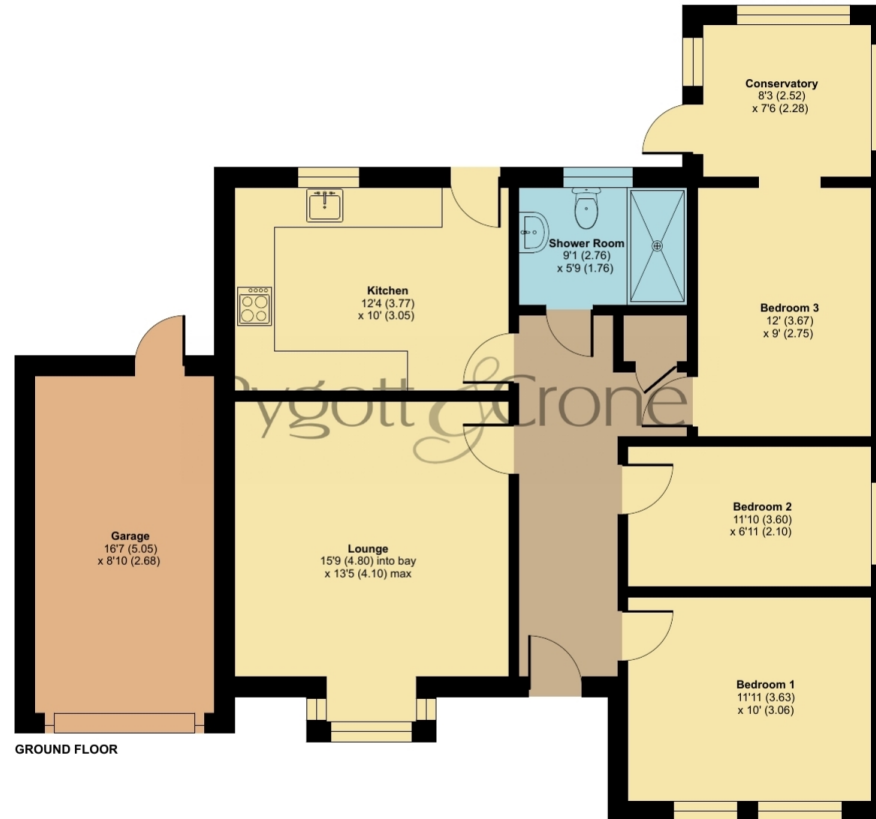


Approximate Area = 900 sq ft / 83.6 sq m

Garage = 146 sq ft / 13.5 sq m

Total = 1046 sq ft / 97.1 sq m

For identification only - Not to scale



Floor plan produced in accordance with RICS Property Measurement 2nd Edition, Incorporating International Property Measurement Standards (IPMS2 Residential). © nchecom 2025. Produced for Pygott & Crone. REF: 1479147



Location



Show on Google: [schools](#), [doctors](#), [supermarkets](#), [restaurants](#), [railway stations](#)



Stonebow
Financial Services Ltd

Do you need Financial Help or Advice?

We are offering free advice through Mortgage Advice Bureau. If you would like to discuss your finances or mortgage, we'll arrange for a qualified adviser to call you back at a convenient time.



Ahmed Jilil
Financial Services Director

0330 912 0007

Your home may be repossessed if you do not keep up repayments on your mortgage.

There may be a fee for mortgage advice. The actual amount you pay will depend upon your circumstances. The fee is up to 1% but a typical fee is 0.3% of the amount borrowed.







Houses. Homes. Harmony.



2 Maple Grove, Heckington
is on the market with our Sleaford branch

19 Southgate, Sleaford NG34 7SU

01529 414333