



The Lilacs, Tattershall Bridge Road  
Tattershall Bridge, Lincoln, Lincolnshire, LN4 4JL

Offers in the region of  
**£230,000**

## 3 Bedroom Detached Bungalow

- Freehold
- Detached Bungalow
- 3 Bedrooms
- Modern Kitchen & Bathroom
- Spacious Garden Room
- Large Workshop
- Off-Road Parking For Multiple Vehicles
- Highly-Sought After Location
- EPC Rating - D, Council Tax Band - C

[Click here to access the Energy Performance Certificate for The Lilacs, Tattershall Bridge Road, Tattershall Bridge, Lincoln, Lincolnshire, LN4 4JL](#)



## Overview

Situated in a nice little hamlet just outside of the popular village Tattershall, this well-presented three-bedroom detached bungalow offers spacious single-storey living, off-road parking and a versatile workshop to the rear.

The property comprises a welcoming entrance utility leading to a modern kitchen/diner. A central hall way connects the lounge and three well-proportioned bedrooms, offering flexibility for family life, guests or home working, together with a family bathroom fitted with a modern suite. To the rear of the property is a delightful garden room overlooking the garden – ideal as a second reception area, dining space, hobby room or home office.



Externally, the property benefits from off-road parking to the front and a private rear garden, mainly laid with low maintenance patio. Additionally The Lilacs offers a large workshop equipped with power, lighting and its own WC.

Offering comfortable accommodation in the desirable hamlet of Tattershall Bridge, The Lilacs enjoys a well-connected yet peaceful setting. The property benefits from easy access to nearby villages including Coningsby and Woodhall Spa, both offering a range of shops, cafés and amenities, along with well-regarded schools and convenient public transport links. Surrounded by attractive countryside and close to the River Witham, this home provides an excellent opportunity for those seeking single-level living in a tranquil location.





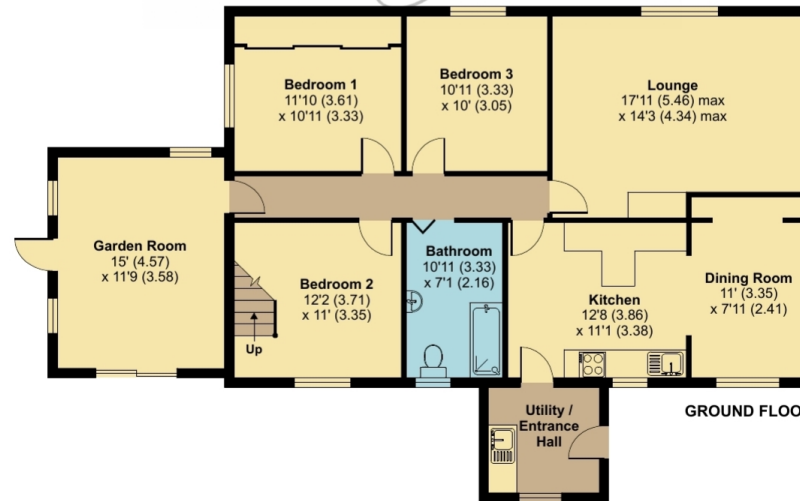
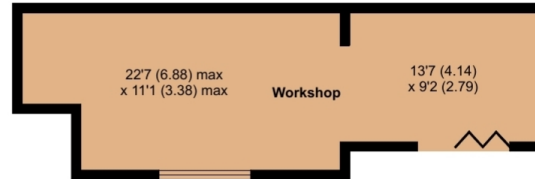
# Tattershall Bridge, Lincoln, LN4

Approximate Area = 1520 sq ft / 141.2 sq m  
 Limited Use Area(s) = 233 sq ft / 21.6 sq m  
 Workshop = 361 sq ft / 33.5 sq m  
 Total = 2114 sq ft / 196.3 sq m

For identification only - Not to scale



Denotes restricted head height



Floor plan produced in accordance with RICS Property Measurement 2nd Edition, Incorporating International Property Measurement Standards (IPMS2 Residential). © ncthemcom 2026. Produced for Pygott & Crone. REF: 1411289



## Location



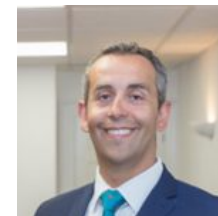
Show on Google: [schools](#), [doctors](#), [supermarkets](#), [restaurants](#), [railway stations](#)



**Stonebow**  
Financial Services Ltd

### Do you need Financial Help or Advice?

We are offering free advice through Mortgage Advice Bureau. If you would like to discuss your finances or mortgage, we'll arrange for a qualified adviser to call you back at a convenient time.



Ahmed Jilil  
Financial Services Director

0330 912 0007

Your home may be repossessed if you do not keep up repayments on your mortgage.

There may be a fee for mortgage advice. The actual amount you pay will depend upon your circumstances. The fee is up to 1% but a typical fee is 0.3% of the amount borrowed.





The Lilacs, Tattershall Bridge Road, Tattershall Bridge, Lincoln, Lincolnshire, LN4 4JL



**Pygott & Crone**

Platinum Trusted Service Award  
★★★★★  
2021 feefo

## Book your free, property valuation.

- 24/7 Customer Service
- £0 Upfront Fees to Pay
- On average, 98% of asking price achieved

# Pygott Plus<sup>+</sup>

**YOUR PERSONAL PROPERTY JOURNEY**

- + Register your buyer's criteria
- + Access online viewings
- + Access property documents
- + Available 24/7 wherever you are
- + Easy to activate, easy to use



Houses. Homes. Harmony.



The Lilacs, Tattershall Bridge Road, Tattershall Bridge  
is on the market with our Sleaford branch

---

19 Southgate, Sleaford NG34 7SU

01529 414333