



Apartment 1, St. Georges Court, 51A Cromford
Road
Langley Mill, Nottingham, Nottinghamshire, NG16 4EH

£145,000

2 Bedroom Apartment

- Leasehold
- Modern, tastefully presented apartment in St. Georges Court, Langley Mill
- Open-plan lounge, kitchen, and dining area, ideal for contemporary living
- Sleek, modern kitchen with integrated appliances
- Two well-proportioned bedrooms with a Jack and Jill-style bathroom
- Stylish bathroom with high-quality fittings
- Traditional sash windows adding charm and character
- Underfloor heating throughout for comfort and warmth
- Large, internal but separate storage space within the building
- Dedicated parking space with excellent access to the A610 and M1
- EPC Rating - C, Council Tax Band - A

Click here to access the Energy Performance Certificate for Apartment 1, St. Georges Court, 51A Cromford Road, Langley Mill, Nottingham, Nottinghamshire, NG16 4EH



Overview

This stunning home in St. Georges Court, Langley Mill, offers a perfect blend of modern design and practical living. Step into a welcoming hallway that leads seamlessly to the open-plan lounge, kitchen, and dining area. A bright, versatile space ideal for relaxing or entertaining. The modern kitchen is fitted with sleek units and integrated appliances, while the stylish lounge/diner provides a comfortable, contemporary living area.



The property features two well-proportioned bedrooms, with the main and second bedroom sharing a Jack and Jill-style bathroom, elegantly designed with high-quality fittings. Traditional sash windows add character and charm, complementing the modern interiors. Underfloor heating runs throughout the home, providing warmth and comfort in every room.

A large, internal but separate storage space is also included within the building, offering excellent additional room for belongings, bikes, or seasonal items. Externally, the property benefits from a dedicated parking space, and its location ensures excellent connectivity, with easy access to both the A610 and M1 for commuting or leisure travel. Tastefully finished and thoughtfully designed, this home is ideal for anyone seeking a stylish, low-maintenance property in a convenient and desirable location.

Please note - We have been advised that the property is Leasehold with 116 years left on the lease and that the cost per annum for ground rent and service charge is approximately £1300.





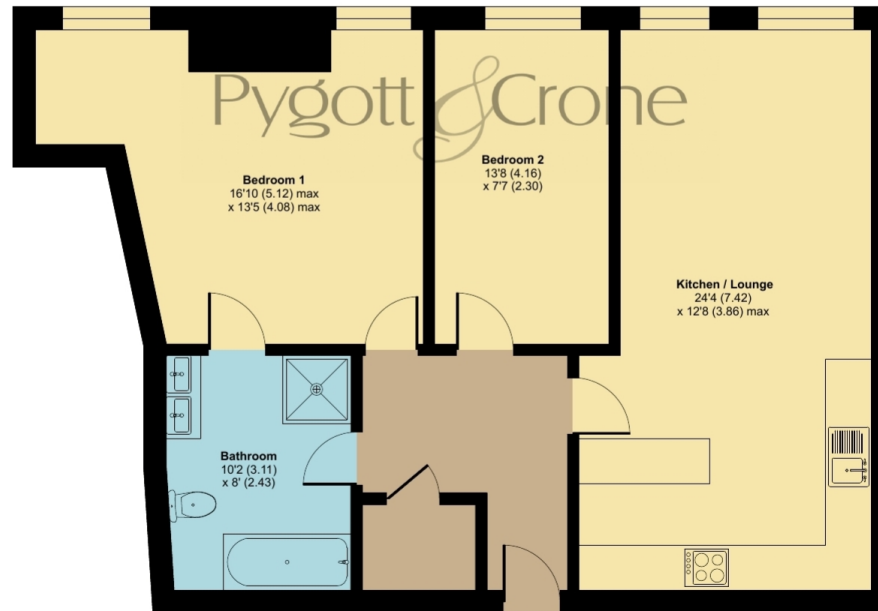
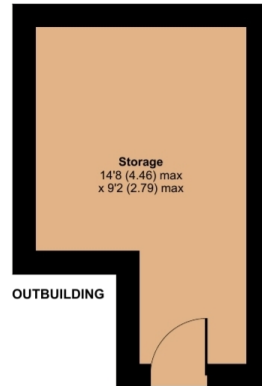
St. Georges Court, Cromford Road, Langley Mill,

Approximate Area = 778 sq ft / 72.2 sq m

Outbuilding = 112 sq ft / 10.4 sq m

Total = 890 sq ft / 82.6 sq m

For identification only - Not to scale



FIRST FLOOR

Floor plan produced in accordance with RICS Property Measurement 2nd Edition, Incorporating International Property Measurement Standards (IPMS2 Residential). © ncthem 2026. Produced for Pygott & Crone. REF: 1415389



Location



Show on Google: [schools](#), [doctors](#), [supermarkets](#), [restaurants](#), [railway stations](#)



Stonebow
Financial Services Ltd

Do you need Financial Help or Advice?

We are offering free advice through Mortgage Advice Bureau. If you would like to discuss your finances or mortgage, we'll arrange for a qualified adviser to call you back at a convenient time.



Jay Zhou

Trainee Mortgage & Protection Adviser

0330 912 0007

Your home may be repossessed if you do not keep up repayments on your mortgage.

There may be a fee for mortgage advice. The actual amount you pay will depend upon your circumstances. The fee is up to 1% but a typical fee is 0.3% of the amount borrowed.





Houses. Homes. Harmony.



Apartment 1, St. Georges Court, 51A Cromford Road, Langley Mill
is on the market with our Nottingham branch

43 Bridlesmith Gate, Nottingham NG1 2GN

0115 896 5072