

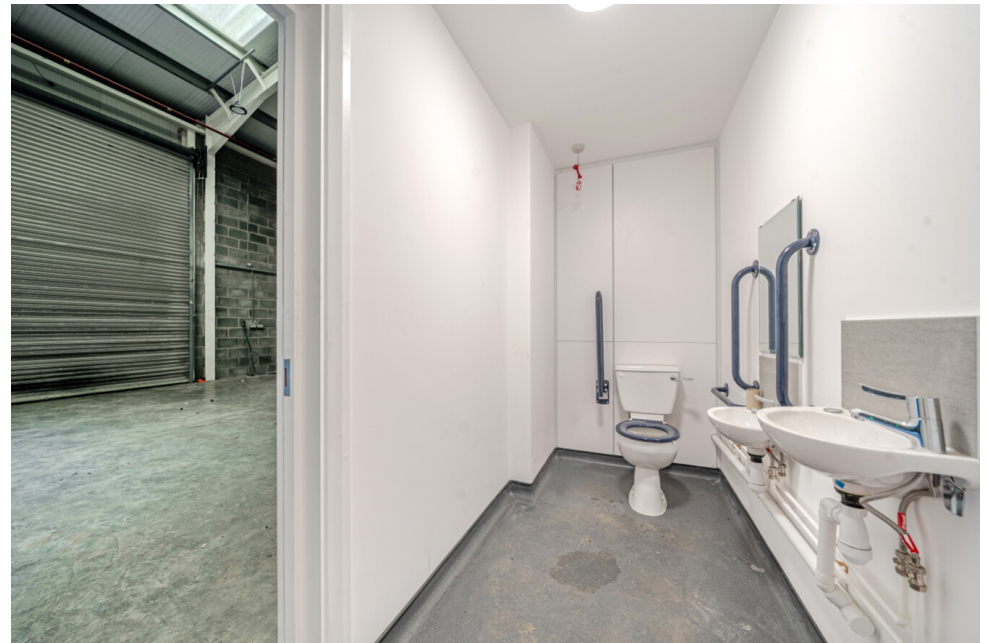


7b, Foundry Way  
March, Cambridgeshire, PE15 0WR

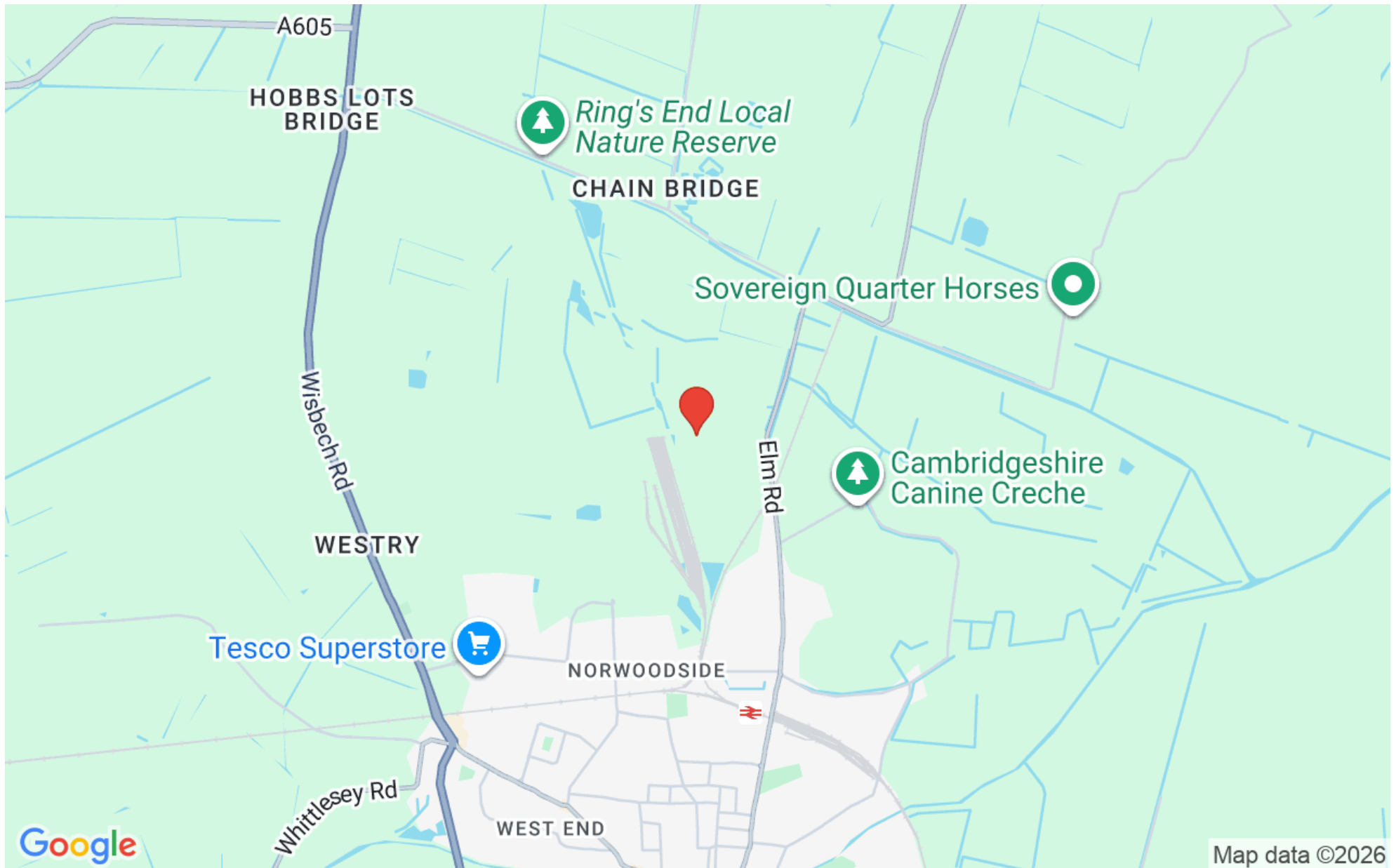
£9,250 pa

## Details

- To Let
- Light industrial unit
- 81 sqm (871 sqft)
- WC and blow heating
- Roller Door
- Full fenced and gated yard
- Negotiable lease terms
- CEPC Rating of C



## Location



## Overview

An excellent opportunity to take a lease on this light industrial unit providing clean and modern industrial space within a gated and fenced compound. The unit is situated within the established Renewal Park Industrial Estate



### Location

The property is located in an established light industrial estate within the Renewal Business Park on the outskirts of March and accessed from Longhill Road off the B1101. March is a well established market town approximately 11 miles south of Wisbech and 19 miles of Peterborough. The town provides a range of amenities including schools, medical facilities, leisure facilities, shops and public transport links. March Railway Station is within one mile of Renewal Park and provides access to Peterborough Station which in turn provides access to Londons Kings Cross via the East Coast Mainline.



## ACCOMMODATION

The units were refurbished in the last 5 years and provide excellent quality light industrial units within a secure fenced and gated common yard area. The site has a wrap around concrete surface yard which provides parking and circulation area. Each unit has a hot air blower and WC.

The unit comprises a mid terraced unit with open workshop, roller door

81 sqm (871 sqft)

## PLANNING

The property has an established use as B1, B2 which has been updated to planning use E

## SERVICES

Mains electricity, water and drainage are connected but services have been tested

## TENURE

The property is offered on a 3 year minimum lease. The rent to be paid quarterly in advance. The unit is subject to an annual service charge. The tenant will be required to pay a 3 month rental deposit. The unit is held on a Full Repairing and Insuring lease.

## RATEABLE VALUE

The property has a rateable value of £5300 and therefore has small business relief

## CEPC

The property has a CEPC rating of C and is valid until the 29th December 2029



## LEGAL COSTS

Each party are responsible for their own legal fees

## VAT

The rent is exclusive of VAT if applicable

## LOCAL AUTHORITY

Fenland District Council

Fenland Hall

County Road

March

Cambridgeshire

PE15 8NQ

Tel 01354 654321

## VIEWINGS

Contact Pygott & Crone Commercial

36a Silver Street

Lincoln

LN2 1EW

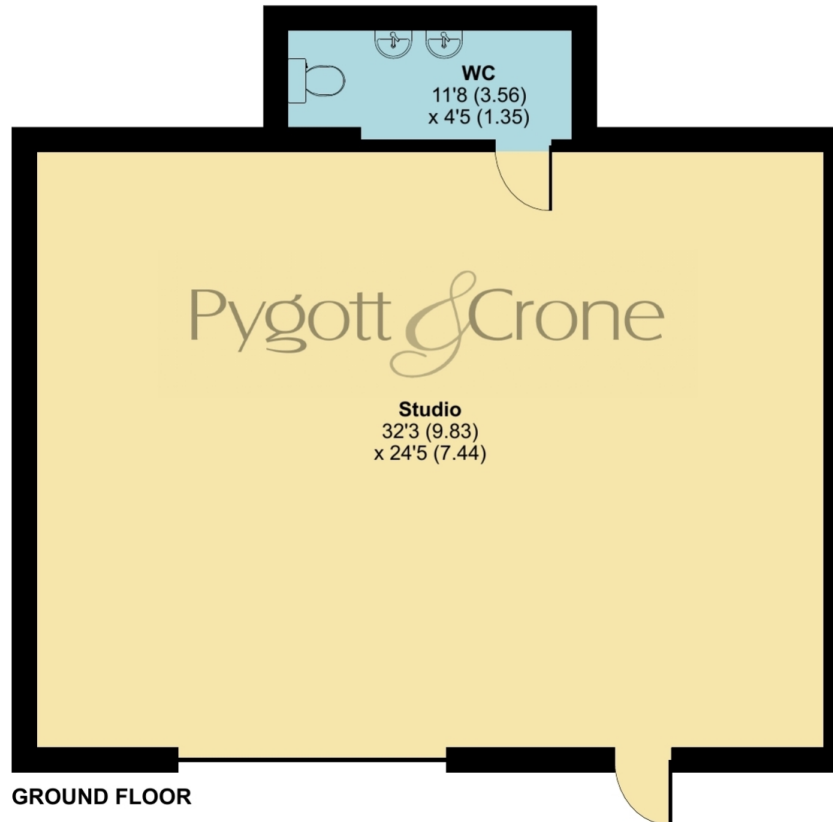
Tel 01522 536777




# Foundry Way, March, PE15

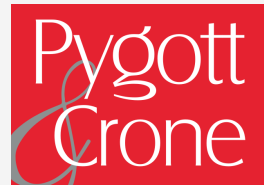
Ground Floor Net Internal Area = 792 sq ft / 73.5 sq m

For identification only - Not to scale



 Floor plan produced in accordance with RICS Property Measurement 2nd Edition, Incorporating International Property Measurement Standards (IPMS3 Commercial). © nlcocom 2026. Produced for Pygott & Crone. REF: 1407422





**7b, Foundry Way, March**  
is marketed through our Commercial office

---

36a Silver Street, Lincoln, LN2 1EW

0330 128 0939