



2 Charles Avenue
Laceby, Grimsby, Lincolnshire, DN37 7EY

£165,000

2 Bedroom Semi-Detached Bungalow

- Freehold
- Semi Detached Bungalow
- 2 Bedrooms
- No Forward Chain
- Laceby
- Ample Off Road Parking
- Detached Garage
- Viewing Essential
- EPC Rating - D, Council Tax Band - B

[Click here to access the Energy Performance Certificate for 2 Charles Avenue, Laceby, Grimsby, Lincolnshire, DN37 7EY](#)



Overview

Situated in the highly sought-after village of Laceby, this two-bedroom semi-detached bungalow is offered for sale with no forward chain, presenting an excellent opportunity for buyers looking to create a home tailored to their own tastes.

Occupying a generous plot, the property benefits from ample off-road parking and offers fantastic potential for modernisation and improvement throughout. Ideal for downsizers, retirement, or those seeking single-storey living, the bungalow provides a flexible layout with scope to add value and make it your own. Internal accommodation briefly comprises: Entrance Hallway, Lounge, 2 Bedrooms, Bathroom and Kitchen. To the rear is a low maintenance garden and detached garage.

Early viewing is highly recommended to appreciate the potential, generous plot, and desirable village location.





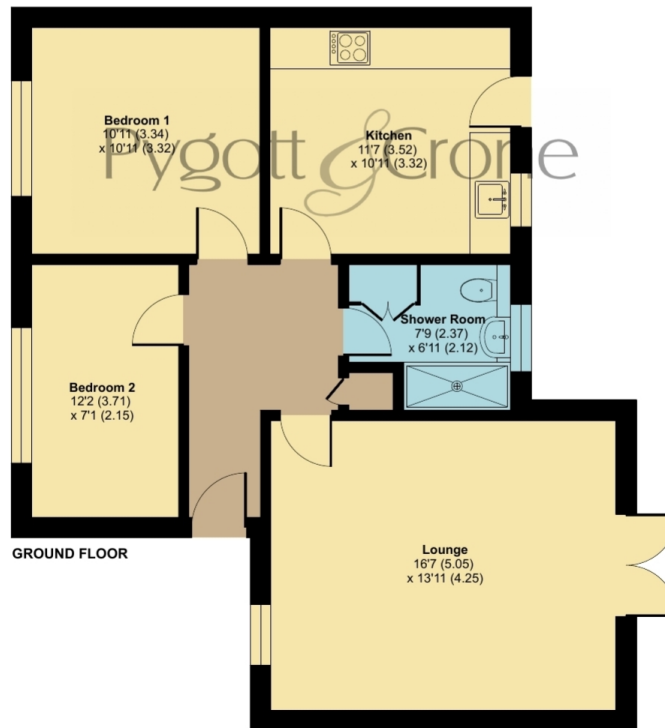
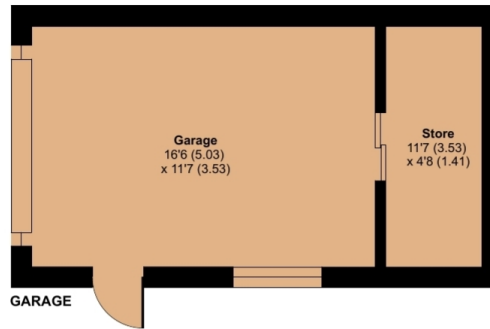
Charles Avenue, Laceby, Grimsby, DN37

Approximate Area = 719 sq ft / 66.7 sq m

Garage = 250 sq ft / 23.2 sq m

Total = 969 sq ft / 89.9 sq m

For identification only - Not to scale



Floor plan produced in accordance with RICS Property Measurement 2nd Edition, Incorporating International Property Measurement Standards (IPMS2 Residential). © ncthemcom 2026. Produced for Pygott & Crone. REF: 1486813



Location



Show on Google: [schools](#), [doctors](#), [supermarkets](#), [restaurants](#), [railway stations](#)



Stonebow
Financial Services Ltd

Do you need Financial Help or Advice?

We are offering free advice through Mortgage Advice Bureau. If you would like to discuss your finances or mortgage, we'll arrange for a qualified adviser to call you back at a convenient time.



Dave Jolley
Mortgage & Protection Adviser

0330 912 0007

Your home may be repossessed if you do not keep up repayments on your mortgage.

There may be a fee for mortgage advice. The actual amount you pay will depend upon your circumstances. The fee is up to 1% but a typical fee is 0.3% of the amount borrowed.

Houses. Homes. Harmony.



2 Charles Avenue, Laceby
is on the market with our Grimsby branch

22 South St Mary's Gate, Grimsby DN31 1LQ

01472 264960