



Apartment 16, Yacht Club Place, Trent Lane
Nottingham, Nottinghamshire, NG2 4RN

£335,000

2 Bedroom Apartment

- Leasehold
- Sought-after first-floor apartment in the desirable Yacht Club Place development
- Prime riverside location alongside the River Trent
- Spacious open-plan kitchen, dining and living area ideal for modern living
- French doors opening onto a private balcony
- Enjoying attractive riverside views
- Two well-proportioned double bedrooms
- Principal bedroom featuring a modern en suite shower room
- Second bedroom with access to a Jack and Jill style bathroom
- Gym, concierge and meeting room
- EPC Rating - B, Council Tax Band - D

Click [here](#) to access the Energy Performance Certificate for Apartment 16, Yacht Club Place, Trent Lane, Nottingham, Nottinghamshire, NG2 4RN



Overview

A beautifully presented two-bedroom first-floor apartment located within the highly sought after Yacht Club Place, enjoying an exceptional riverside position alongside the River Trent. This attractive development offers a peaceful yet vibrant setting, perfectly placed close to West Bridgford, the City Ground, Meadow Lane Stadium and Nottingham city centre, with excellent transport links, scenic riverside walks and a wide range of nearby amenities, bars and restaurants.

The apartment features a spacious open-plan kitchen, dining and living area, designed to maximise natural light and modern living. French doors open directly onto a private balcony, providing stunning riverside views and an ideal space for relaxing or entertaining. The accommodation comprises two generous double bedrooms, with the principal bedroom benefiting from a stylish en suite shower room, while the second bedroom enjoys access to a Jack and Jill bathroom, offering flexibility and convenience for guests. Within the communal areas for this apartment there is a gym, concierge office and meeting room. Combining contemporary design with an enviable waterfront location, this property is ideal for professionals, couples or anyone seeking a high-quality riverside lifestyle in one of Nottingham's most desirable areas.

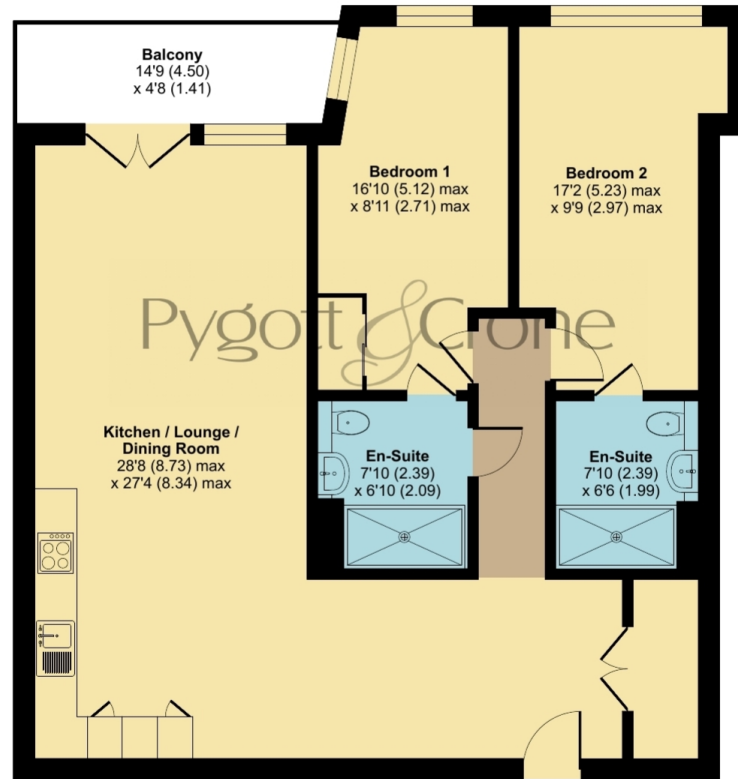




Trent Lane, Nottingham, NG2

Approximate Area = 980 sq ft / 91 sq m

For identification only - Not to scale



FIRST FLOOR

Floor plan produced in accordance with RICS Property Measurement 2nd Edition, Incorporating International Property Measurement Standards (IPMS2 Residential). © nrichcom 2025. Produced for Pygott & Crone. REF: 1394550



Location



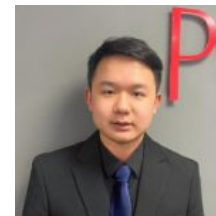
Show on Google: [schools](#), [doctors](#), [supermarkets](#), [restaurants](#), [railway stations](#)



Stonebow
Financial Services Ltd

Do you need Financial Help or Advice?

We are offering free advice through Mortgage Advice Bureau. If you would like to discuss your finances or mortgage, we'll arrange for a qualified adviser to call you back at a convenient time.



Jay Zhou

Trainee Mortgage & Protection Adviser

0330 912 0007

Your home may be repossessed if you do not keep up repayments on your mortgage.

There may be a fee for mortgage advice. The actual amount you pay will depend upon your circumstances. The fee is up to 1% but a typical fee is 0.3% of the amount borrowed.



Apartment 16, Yacht Club Place, Trent Lane, Nottingham, Nottinghamshire, NG2 4RN

Houses. Homes. Harmony.



Apartment 16, Yacht Club Place, Trent Lane, Nottingham
is on the market with our Nottingham branch

43 Bridlesmith Gate, Nottingham NG1 2GN

0115 896 5072