



14 Colonsay Close
Trowell, Nottingham, Nottinghamshire, NG9 3RD

£299,000

3 Bedroom Detached Bungalow

- Freehold
- 3 Bedroom Detached Bungalow
- Drive For Several Cars & Garage
- No Upward Chain
- Well Presented Throughout
- Living/Dining Room
- Breakfast Kitchen
- Gardens To 3 Sides
- Cul De Sac Location
- Close Proximity To Local Amenities, School, Shops and Public Transport Links
- EPC Rating - C, Council Tax Band - D

Click here to access the Energy Performance Certificate for 14 Colonsay Close, Trowell, Nottingham, Nottinghamshire, NG9 3RD



Overview

A well-presented three-bedroom detached bungalow offered for sale with no upward chain, occupying a generous plot with gardens to three sides located on a cul de sac.

The accommodation is both spacious and well planned, beginning with a welcoming entrance hall. The dual-aspect living/dining room provides a bright and versatile space for everyday living and entertaining. There is a fitted kitchen, three well-proportioned bedrooms, and a modern shower room.

Externally, the property benefits from a good-sized driveway providing ample off-road parking and leading to a garage with a convenient side courtesy door. The front and side gardens are mainly laid to lawn, while the rear garden has been designed for ease of maintenance with a patio area, ideal for outdoor seating.



This attractive bungalow is ideal for those seeking single-level living in a pleasant setting and early viewing is recommended.

The property is located in this quiet and desirable residential cul de sac just off Trowell Park Drive which offers easy access to excellent nearby schooling, a range of transport links to and from the surrounding areas, such as the A52 for Nottingham and Derby, Junction 25 of the M1 motorway and the Nottingham electric tram terminus situated at Bardills roundabout.

There is also easy access to ample outdoor space such as Pit Lane, Ilkeston Road Recreation Ground and Bramcote Hills Park. There is also a wide variety of shops, services and amenities situated within the neighbouring towns of Stapleford, Ilkeston and Beeston.

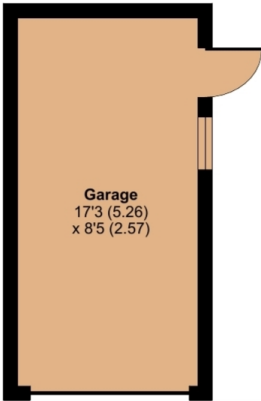




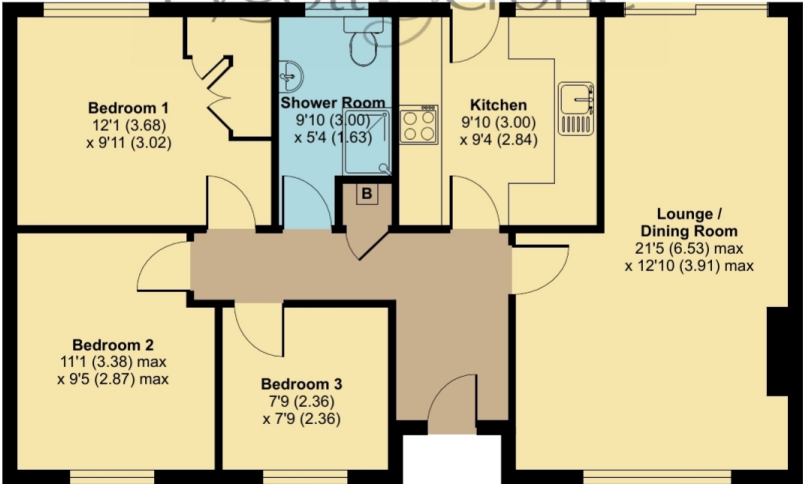
Trowell, Nottingham, NG9

Approximate Area = 761 sq ft / 70.7 sq m
Garage = 147 sq ft / 13.6 sq m
Total = 908 sq ft / 84.3 sq m

For identification only - Not to scale



Pygott & Crone



GROUND FLOOR

Floor plan produced in accordance with RICS Property Measurement 2nd Edition, Incorporating International Property Measurement Standards (IPMS2 Residential). © nrichcom 2026. Produced for Pygott & Crone. REF: 1409477



Location



Show on Google: [schools](#), [doctors](#), [supermarkets](#), [restaurants](#), [railway stations](#)



Stonebow
Financial Services Ltd

Do you need Financial Help or Advice?

We are offering free advice through Mortgage Advice Bureau. If you would like to discuss your finances or mortgage, we'll arrange for a qualified adviser to call you back at a convenient time.



Josh Campbell-Foreman
Mortgage & Protection Adviser

0330 912 0007

Your home may be repossessed if you do not keep up repayments on your mortgage.

There may be a fee for mortgage advice. The actual amount you pay will depend upon your circumstances. The fee is up to 1% but a typical fee is 0.3% of the amount borrowed.







14 Colonsay Close, Trowell, Nottingham, Nottinghamshire, NG9 3RD

Houses. Homes. Harmony.



14 Colonsay Close, Trowell
is on the market with our Wollaton branch

158a Bramcote Lane, Wollaton NG8 2QP

0115 985 4994