



22 St. Helens Avenue
Grimsby, Lincolnshire, DN33 2AH

£160,000

3 Bedroom Semi-Detached House

- Freehold
- Semi Detached Property
- 3 Bedrooms
- Scartho Location
- Well Presented Throughout
- Off Road Parking
- No Onward Chain
- Spacious Rear Garden
- EPC Rating - D, Council Tax Band - C

[Click here to access the Energy Performance Certificate for 22 St. Helens Avenue, Grimsby, Lincolnshire, DN33 2AH](#)



Overview

Beautiful 3-Bedroom Semi-Detached Home in Highly Sought-After Scartho

Offered for sale with No Onward Chain! This well-presented three-bedroom semi-detached property is ideally situated in the popular and desirable area of Scartho. Ready to move straight into, the home offers comfortable living throughout and ready for any buyer to put their own stamp on. Located close to a range of local amenities, shops, and well-regarded schools, this home is perfectly positioned for everyday convenience.

Internal accommodation briefly comprises of: Entrance hallway, Lounge, Dining Room and Kitchen. Upstairs are 3 Bedrooms and Family Bathroom. To the front of the property, there is convenient off-road parking, while the rear boasts a large, spacious garden—perfect for families, entertaining, or relaxing outdoors.

An excellent opportunity for first-time buyers, families, or anyone looking to settle in this sought-after area. There is a shared drive to the side of the property and early viewing is highly recommended.





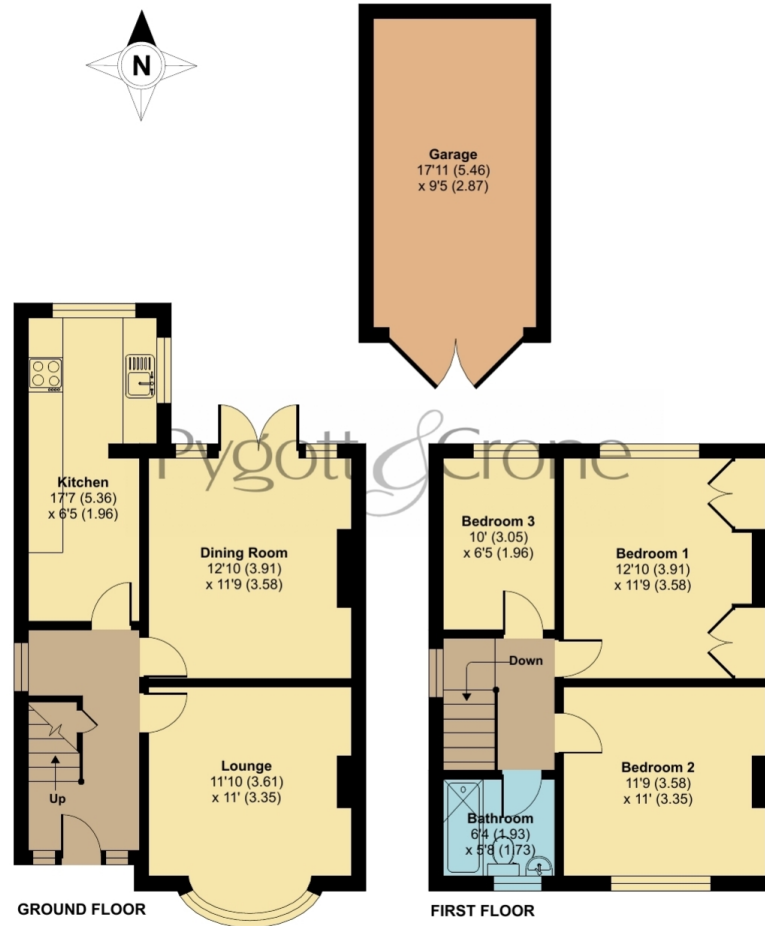
St. Helens Avenue, Grimsby, DN33

Approximate Area = 979 sq ft / 90.9 sq m

Garage = 171 sq ft / 15.9 sq m

Total = 1150 sq ft / 106.8 sq m

For identification only - Not to scale



Floor plan produced in accordance with RICS Property Measurement 2nd Edition, Incorporating International Property Measurement Standards (IPMS2 Residential). © nctchem 2025. Produced for Pygott & Crone. REF: 1387624



Location



Show on Google: [schools](#), [doctors](#), [supermarkets](#), [restaurants](#), [railway stations](#)



Stonebow
Financial Services Ltd

Do you need Financial Help or Advice?

We are offering free advice through Mortgage Advice Bureau. If you would like to discuss your finances or mortgage, we'll arrange for a qualified adviser to call you back at a convenient time.



Dave Jolley
Mortgage & Protection Adviser

0330 912 0007

Your home may be repossessed if you do not keep up repayments on your mortgage.

There may be a fee for mortgage advice. The actual amount you pay will depend upon your circumstances. The fee is up to 1% but a typical fee is 0.3% of the amount borrowed.



Pygott & Crone

Platinum Trusted Service Award
★★★★★
2021 feefo

Book your free, property valuation.

- 24/7 Customer Service
- £0 Upfront Fees to Pay
- On average, 98% of asking price achieved

Pygott Plus+

YOUR PERSONAL PROPERTY JOURNEY

- + Register your buyer's criteria
- + Access online viewings
- + Access property documents
- + Available 24/7 wherever you are
- + Easy to activate, easy to use



Houses. Homes. Harmony.



22 St. Helens Avenue, Grimsby
is on the market with our Grimsby branch

22 South St Mary's Gate, Grimsby DN31 1LQ

01472 264960