



Apartment 53, Yacht Club Place, Trent Lane
Nottingham, Nottinghamshire, NG2 4RN

£345,000

2 Bedroom Apartment

- Leasehold
- Two-bedroom apartment in the Yacht Club on the River Trent.
- Open-plan kitchen, dining, and lounge with plenty of natural light.
- Modern kitchen with integrated appliances.
- A spacious main bedroom served by a shower room with hallway access
- A separate private en suite bedroom
- Access to communal gym and workroom.
- Includes a dedicated parking space.
- Close to shops, transport, and riverside walks.
- Well maintained communal outdoor spaces for relaxing by the river.
- EPC Rating - B, Council Tax Band - D

Click here to access the Energy Performance Certificate for Apartment 53, Yacht Club Place, Trent Lane, Nottingham, Nottinghamshire, NG2 4RN



Overview

This two bedroom apartment is part of the Yacht Club development, nicely positioned on the banks of the River Trent, offering pleasant views of the water.

The open plan living space combines the kitchen, dining, and lounge areas, creating a practical and comfortable environment that benefits from plenty of natural light through large windows. The kitchen is fitted with modern, integrated appliances and offers ample storage and work surfaces.



The apartment includes a main bedroom with its own private en suite bathroom, providing added convenience and privacy, alongside a separate main bathroom that serves the second bedroom and guests. Throughout the home, there are good quality finishes, including neutral décor and modern fixtures. Residents of the development enjoy access to a communal gym and a shared workroom, providing convenient spaces for fitness and productivity.

Additionally, the apartment comes with a dedicated parking space. Well maintained communal outdoor areas are perfect for relaxing by the river, and the location offers easy access to local shops, transport links, and scenic walking routes, making this apartment an appealing choice for comfortable and convenient riverside living.

Agents note: the current annual costs have been provided by the vendor. There is 242 years remaining on the lease, the current annual service charge is £2555.54. Heating is also provided by a communal system.



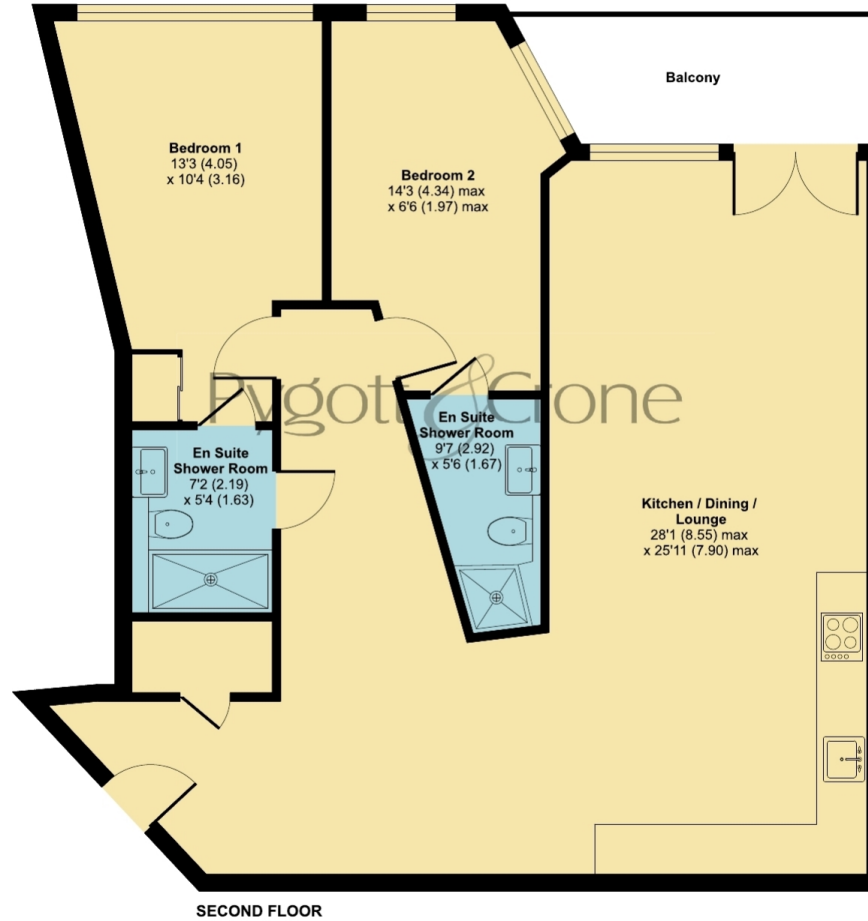




Yacht Club Place, Trent Lane, Nottingham, NG2

Approximate Area = 917 sq ft / 85.1 sq m

For identification only - Not to scale



 Floor plan produced in accordance with RICS Property Measurement 2nd Edition, Incorporating International Property Measurement Standards (IPMS2 Residential). © nchecon 2025. Produced for Pygott & Crone. REF: 1357555



Pygott & Crone

Platinum Trusted Service Award
★★★★★
2021 feefo

Book your free, property valuation.

- 24/7 Customer Service
- £0 Upfront Fees to Pay
- On average, 98% of asking price achieved

Pygott Plus⁺

YOUR PERSONAL PROPERTY JOURNEY

- + Register your buyer's criteria
- + Access online viewings
- + Access property documents
- + Available 24/7 wherever you are
- + Easy to activate, easy to use

Welcome to Pygott Plus⁺

Email address

Password

Login



Location



Show on Google: [schools](#), [doctors](#), [supermarkets](#), [restaurants](#), [railway stations](#)



Stonebow
Financial Services Ltd

Do you need Financial Help or Advice?

We are offering free advice through Mortgage Advice Bureau. If you would like to discuss your finances or mortgage, we'll arrange for a qualified adviser to call you back at a convenient time.



Jay Zhou

Trainee Mortgage & Protection Adviser

0330 912 0007

Your home may be repossessed if you do not keep up repayments on your mortgage.

There may be a fee for mortgage advice. The actual amount you pay will depend upon your circumstances. The fee is up to 1% but a typical fee is 0.3% of the amount borrowed.

Houses. Homes. Harmony.



Apartment 53, Yacht Club Place, Trent Lane, Nottingham
is on the market with our Nottingham branch

43 Bridlesmith Gate, Nottingham NG1 2GN

0115 896 5072