



63 Gadwall Road Stoke Bardolph
Burton Joyce, Nottingham, Nottinghamshire, NG14 5JJ

£230,000

3 Bedroom Semi-Detached House

- Freehold
- No Onward Chain
- Entrance hall with useful downstairs WC
- Comfortable lounge with understairs storage
- Modern kitchen/diner with integrated appliances
- 3 Bedrooms
- Main bedroom with en suite and built in storage
- Family bathroom with three piece suite
- Driveway at the front with space for two cars
- Rear garden with patio and lawned area
- EPC Rating - B, Council Tax Band - C

[Click here to access the Energy Performance Certificate for 63 Gadwall Road Stoke Bardolph, Burton Joyce, Nottingham, Nottinghamshire, NG14 5JJ](#)



Overview

This well presented three bedroom semi detached home is located on the sought after Bardolph View estate, offering a great mix of modern comfort and access to nature. Just a short walk from the River Trent and the scenic Netherfield Lagoons, it's an ideal setting for those who enjoy walking, running, cycling, birdwatching, or simply spending time outdoors.



The property features a practical layout with an entrance hall, useful downstairs WC, a bright and comfortable lounge with understairs storage and a modern kitchen/diner complete with integrated appliances perfect for both everyday living and entertaining. Upstairs, there are three bedrooms, with the main bedroom benefiting from its own en suite and built-in storage. A three piece family bathroom and a landing storage cupboard add extra convenience. Externally, the home offers a double driveway to the front, gated side access, and a private rear garden with a patio and lawn ideal for relaxing or hosting in the warmer months.

The Bardolph View estate is a well maintained and quiet residential area with a friendly atmosphere and a mix of modern homes. It's popular with a range of buyers, thanks to its peaceful setting and convenient access to nearby amenities, schools, and public transport. Green spaces and riverside walks are close by, while the nearby towns of Burton Joyce and Netherfield offer a good choice of shops, cafes, and services. For those looking for a home in a calm, well-connected location, Bardolph View is a great option.

Agent's Note: We have been advised by the vendor that the property is currently let on an AST; the lease end date is the 7th December 2025.

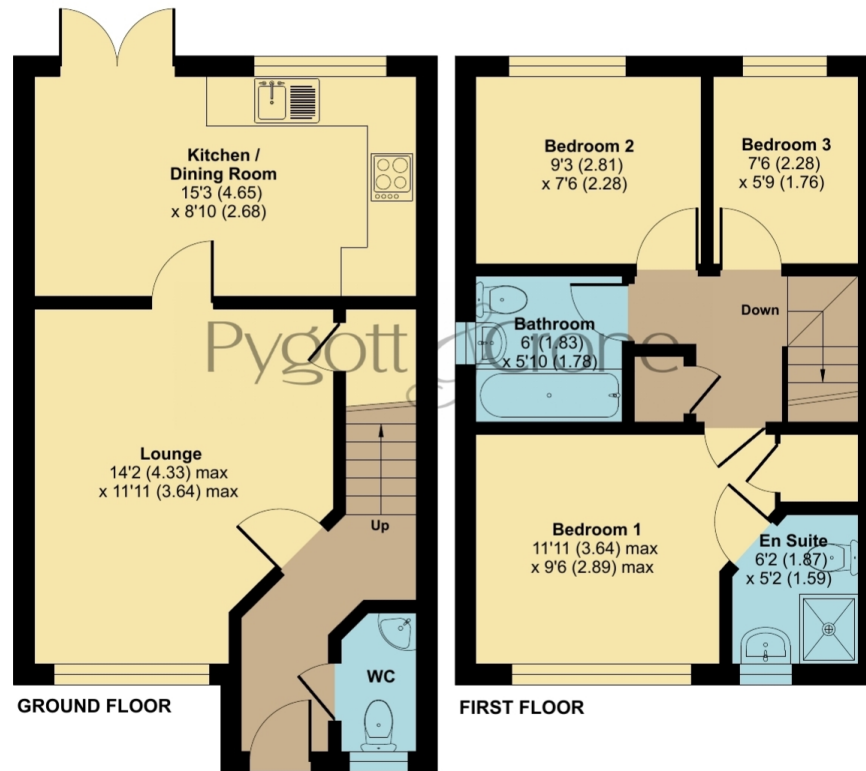




Gadwall Road, Stoke Bardolph, Burton Joyce, Nottingham, NG14

Approximate Area = 741 sq ft / 68.8 sq m

For identification only - Not to scale



Floor plan produced in accordance with RICS Property Measurement 2nd Edition, Incorporating International Property Measurement Standards (IPMS2 Residential). © nchecom 2025. Produced for Pygott & Crone. REF: 1355964



Location



Show on Google: [schools](#), [doctors](#), [supermarkets](#), [restaurants](#), [railway stations](#)



Stonebow
Financial Services Ltd

Do you need Financial Help or Advice?

We are offering free advice through Mortgage Advice Bureau. If you would like to discuss your finances or mortgage, we'll arrange for a qualified adviser to call you back at a convenient time.



Jay Zhou

Trainee Mortgage & Protection Adviser

0330 912 0007

Your home may be repossessed if you do not keep up repayments on your mortgage.

There may be a fee for mortgage advice. The actual amount you pay will depend upon your circumstances. The fee is up to 1% but a typical fee is 0.3% of the amount borrowed.





63 Gadwall Road Stoke Bardolph, Burton Joyce, Nottingham, Nottinghamshire, NG14 5JJ

Houses. Homes. Harmony.



63 Gadwall Road Stoke Bardolph, Burton Joyce
is on the market with our Nottingham branch

43 Bridlesmith Gate, Nottingham NG1 2GN

0115 896 5072