



6 St. Johns Court
Grimsby, Lincolnshire, DN34 5TE

£105,000

2 Bedroom Terraced Bungalow

- Leasehold
- End of Terrace Bungalow
- 2 Bedrooms
- Over 55's Development
- Grimsby Location
- Warden Controlled
- Well Presented Throughout
- No Onward Chain
- EPC Rating - D, Council Tax Band - B

[Click here to access the Energy Performance Certificate for 6 St. Johns Court, Grimsby, Lincolnshire, DN34 5TE](#)



Overview

Pygott & Crone are excited to offer for sale this beautifully presented over 55's Two Bedroom End of Terrace Bungalow that is ready to be moved into. Situated in Grimsby on the Cambridge Park Development, the bungalow is warden-controlled which comes with No Onward Chain! Amenities are within walking distance for extra convenience.

Internal accommodation briefly comprises; Entrance Hallway, Lounge, Shower Room, Two Bedrooms and Kitchen. To the front of the property is a paved area giving you outdoor space to relax with on site parking available. Viewing is essential to fully appreciate the living accommodation on offer.

Agents note: The property is Leasehold with 125 years from 1st of July 1987. There is a monthly service charge of £270.99 and the annual ground rent is £94.

Monthly Service Charge Includes:

- Cost of Warden Control
- Community ground maintenance
- All external maintenance of the property including external window cleaning
- Building insurance
- Use of guest accommodation

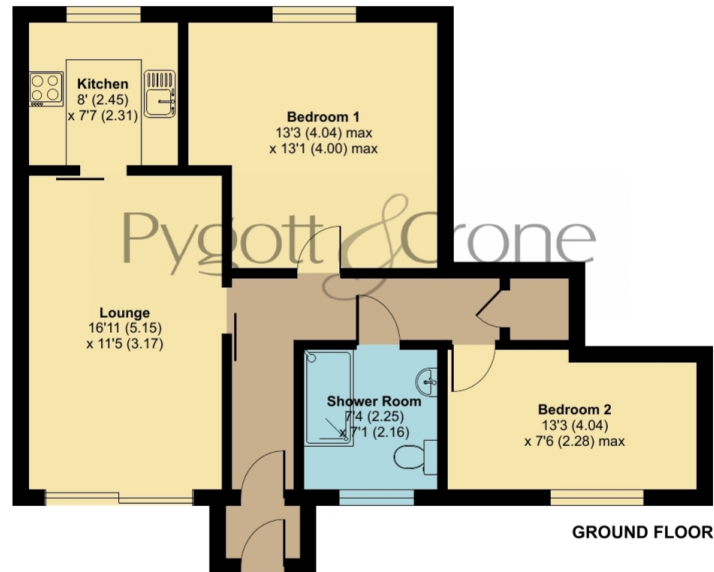




St. Johns Court, Grimsby, DN34

Approximate Area = 687 sq ft / 63.8 sq m

For identification only - Not to scale



Floor plan produced in accordance with RICS Property Measurement 2nd Edition, Incorporating International Property Measurement Standards (IPMS2 Residential). © nchecom 2025. Produced for Pygott & Crone. REF: 1347340



Location



Show on Google: [schools](#), [doctors](#), [supermarkets](#), [restaurants](#), [railway stations](#)



Stonebow
Financial Services Ltd

Do you need Financial Help or Advice?

We are offering free advice through Mortgage Advice Bureau. If you would like to discuss your finances or mortgage, we'll arrange for a qualified adviser to call you back at a convenient time.



Dave Jolley
Mortgage & Protection Adviser

0330 912 0007

Your home may be repossessed if you do not keep up repayments on your mortgage.

There may be a fee for mortgage advice. The actual amount you pay will depend upon your circumstances. The fee is up to 1% but a typical fee is 0.3% of the amount borrowed.

Houses. Homes. Harmony.



6 St. Johns Court, Grimsby
is on the market with our Grimsby branch

22 South St Mary's Gate, Grimsby DN31 1LQ

01472 264960