



New Build Adjacent to The Oak, South Street  
Swineshead, Boston, Lincolnshire, PE20 3JD

£300,000

## 3 Bedroom Bungalow

- New Build Bungalow
- Almost 1000sqft Of Accommodation
- Swineshead Village Location
- Due For Completion Summer 2026
- 3 Bedrooms
- Road Frontage with a Detached Garage and Driveway
- Generous Plot
- 5KW Solar Panel System, EV Charger
- EPC Rating - TBC, Council Tax Band - TBC



## Overview

Pygott and Crone are delighted to market this Brand New three bedroom detached bungalow located within the heart of Swineshead Village. As the build is still underway buyers are able to have a choice of a range of kitchens and bathrooms.

Having road frontage, a generous plot and a detached brick-built garage, the property will also benefit from a 5KW solar Panel System and an EV Charger.

Due for completion in summer 2026, the accommodation will measure almost 1000sqft and briefly comprise of, Entrance Hall, Lounge, Three Bedrooms, Family Bathroom and a 'Heart of the Home' Living kitchen with Lounge, Dining Area, Fitted Kitchen and two sets of patio doors.

We have also been advised by the developer that the property is expected to have an A+ EPC rating.

Agents Note: The images are computer-generated and intended to provide an accurate representation of how the bungalow is expected to look upon completion.

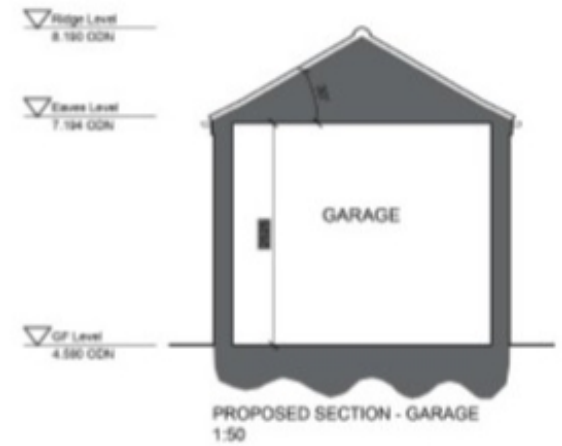
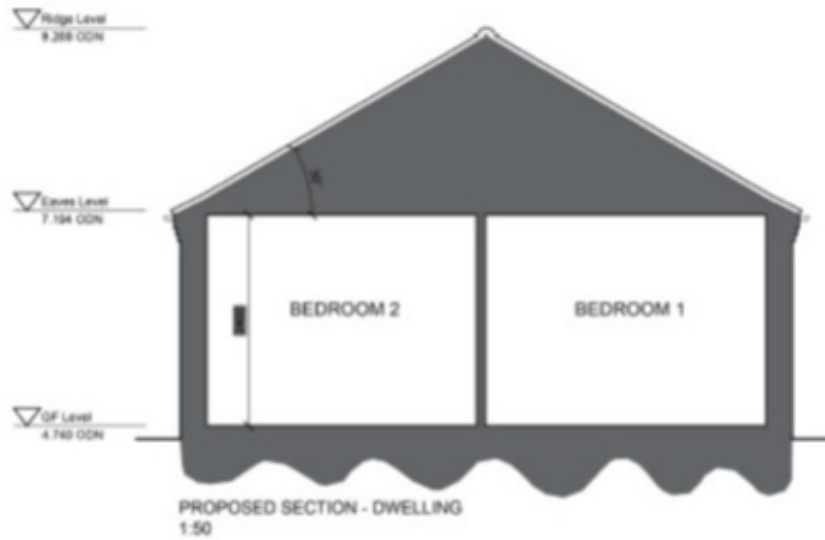
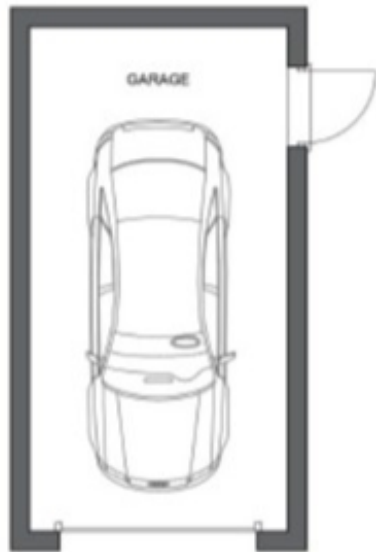
For more information or to arrange a site visit, please contact the selling agent on 01205 359111.



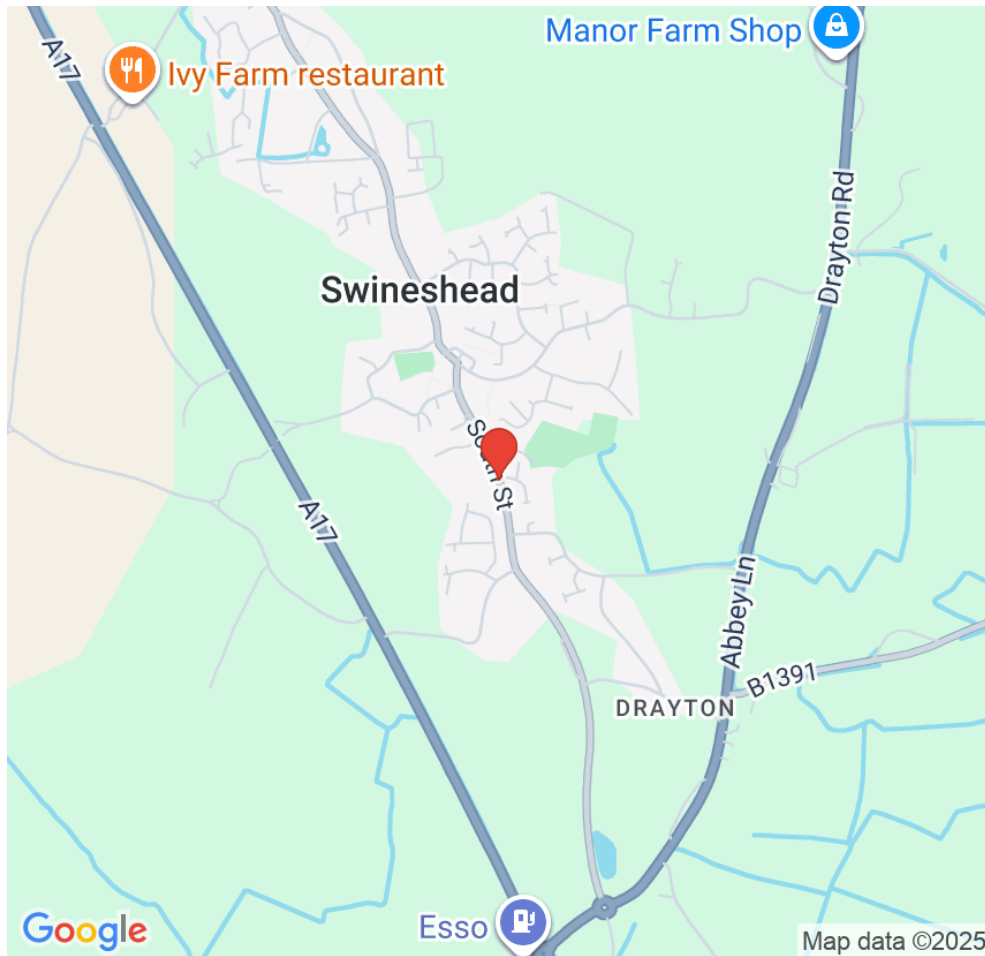


New Build Adjacent to The Oak, South Street, Swineshead, Boston, Lincolnshire, PE20 3JD





## Location



Show on Google: [schools](#), [doctors](#), [supermarkets](#), [restaurants](#), [railway stations](#)



**Stonebow**  
Financial Services Ltd

### Do you need Financial Help or Advice?

We are offering free advice through Mortgage Advice Bureau. If you would like to discuss your finances or mortgage, we'll arrange for a qualified adviser to call you back at a convenient time.



**Josh Campbell-Foreman**  
Mortgage & Protection Adviser

0330 912 0007

Your home may be repossessed if you do not keep up repayments on your mortgage.

There may be a fee for mortgage advice. The actual amount you pay will depend upon your circumstances. The fee is up to 1% but a typical fee is 0.3% of the amount borrowed.

Houses. Homes. Harmony.



New Build Adjacent to The Oak, South Street, Swineshead  
is on the market with our Boston branch

---

24 Wide Bargate, Boston PE21 6RX

01205 359111