



5 Bentley Way  
Metherringham, Lincoln, Lincolnshire, LN4 3EN

£425,000

## 3 Bedroom Detached Bungalow

- Freehold
- Extended Detached Bungalow
- 3 Bedrooms
- L Shaped Kitchen
- Dining & Sitting Area
- Bathroom & Shower Room
- Extensive Plot & Private Position
- Double Garage & Car Port
- Highly Sought After Village Location
- EPC Rating - C, Council Tax Band - D

[Click here to access the Energy Performance Certificate for 5 Bentley Way, Metherringham, Lincoln, Lincolnshire, LN4 3EN](#)



## Overview

Pygott and Crone are delighted to present this beautifully maintained and extended three-bedroom detached bungalow, set on a generous and private plot with the added benefits of a double garage and car port.

The spacious and well-presented accommodation briefly comprises: Entrance Porch, Lounge, L-shaped Kitchen, Dining and Sitting Area, Shower Room, Family Bathroom, and three generously sized Bedrooms.

Externally, the property is accessed via a private driveway offering ample off-road parking for 5–6 vehicles. Additional features include a Double Garage, Car Port, Summer House, and a thoughtfully landscaped rear garden. The home also benefits from gas central heating and a comprehensive CCTV security system.

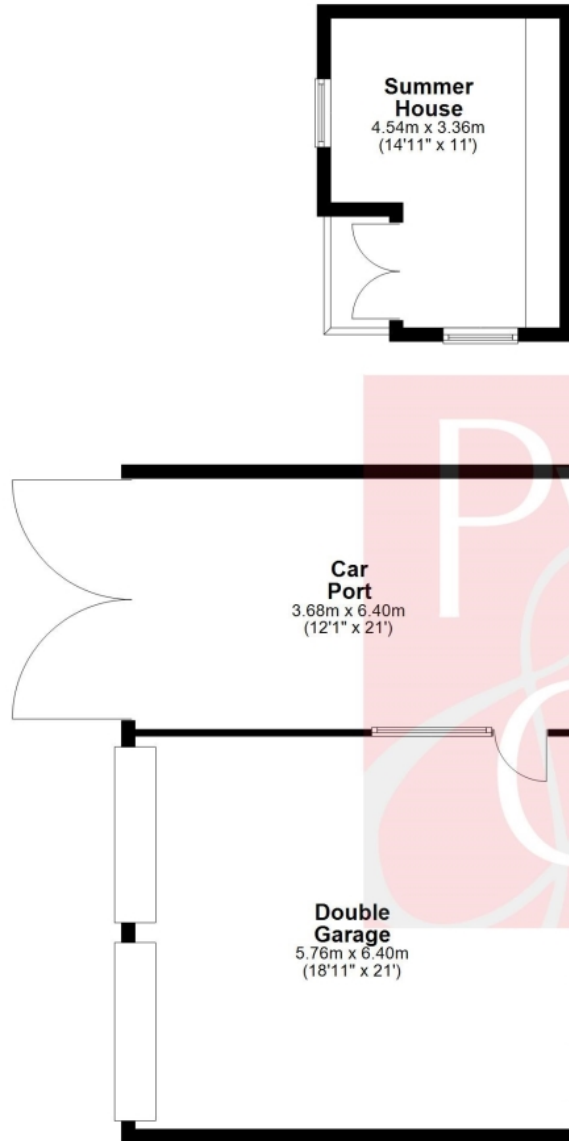
Situated in the sought-after village of Metheringham, the property enjoys convenient access to a wide range of local amenities such as highly regarded primary and secondary schools, supermarkets, a train station, regular bus services, cafes, pubs, and more.





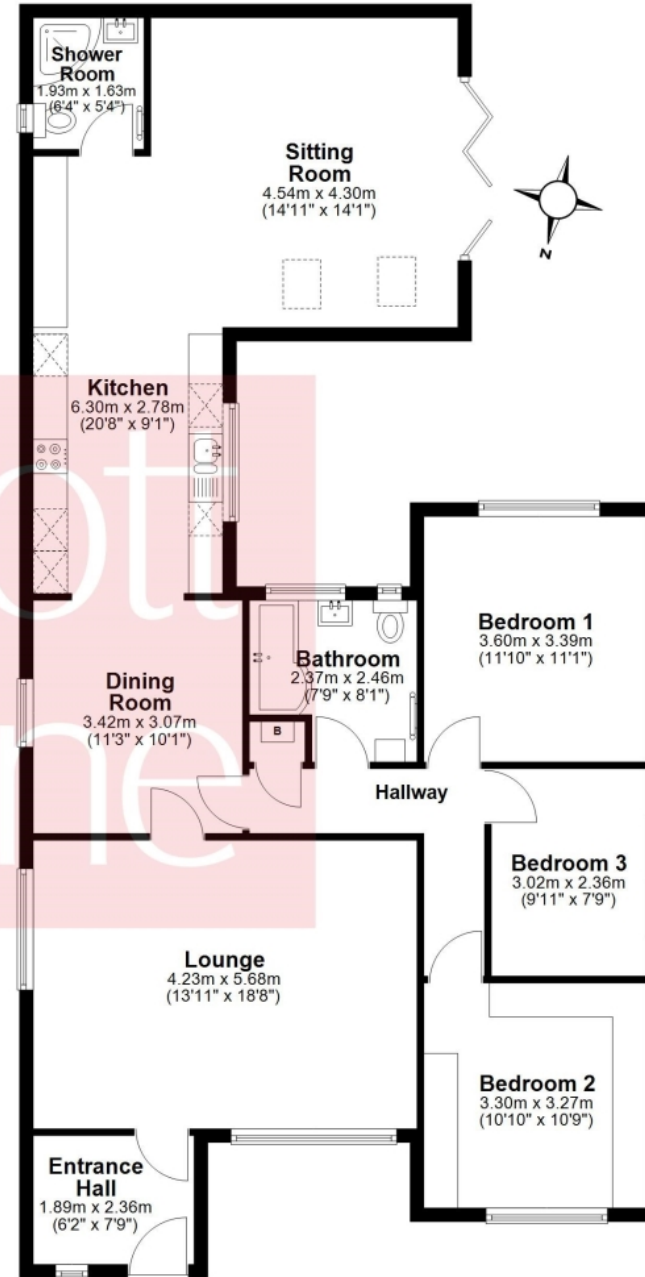
### Outbuildings

Approx. 74.4 sq. metres (800.5 sq. feet)



### Ground Floor

Approx. 122.6 sq. metres (1319.3 sq. feet)



Total area: approx. 196.9 sq. metres (2119.8 sq. feet)

Floor plan created by Matte Black Media.  
Plan produced using PlanUp.



## Location



Show on Google: [schools](#), [doctors](#), [supermarkets](#), [restaurants](#), [railway stations](#)



**Stonebow**  
Financial Services Ltd

### Do you need Financial Help or Advice?

We are offering free advice through Mortgage Advice Bureau. If you would like to discuss your finances or mortgage, we'll arrange for a qualified adviser to call you back at a convenient time.



**Bianca van Tonder**  
Mortgage & Protection Adviser

0330 912 0007

Your home may be repossessed if you do not keep up repayments on your mortgage.

There may be a fee for mortgage advice. The actual amount you pay will depend upon your circumstances. The fee is up to 1% but a typical fee is 0.3% of the amount borrowed.











Houses. Homes. Harmony.



5 Bentley Way, Metheringham  
is on the market with our Lincoln branch

---

36a Silver Street, Lincoln LN2 1EW

01522 568822