



Plot 5, Windmill Grove
South Leverton, Retford, Nottinghamshire, DN22 0GD

£650,000

4 Bedroom Detached House

- Freehold
- Brand new luxury homes
- 4 & 5 Bedroom homes
- High specification finishes
- Contemporary designed living spaces
- Open countryside views
- Generous size living spaces
- Private development of only 5 homes
- Freehold
- EPC Rating - C, Council Tax Band - TBC

[Click here to access the Energy Performance Certificate for Plot 5, Windmill Grove, South Leverton, Retford, Nottinghamshire, DN22 0GD](#)



Overview

A Contemporary Countryside Retreat - Five Bedrooms - Three Reception Rooms - Three Bathrooms - Double Garage - Exclusive Cul-de-Sac Setting.

Discover the perfect blend of style, space and rural charm with this exceptional five-bedroom detached home on Retford Road in the sought-after village of South Leverton. Designed for modern family living, this brand-new property offers high-spec finishes, versatile living spaces, and a peaceful location—just minutes from the market town of Retford.

Step inside to a beautifully designed interior, featuring a full-length lounge, a bright breakfast room, and a striking open-plan kitchen/snug with premium appliances, stylish cabinetry, and French doors leading to a generous enclosed garden. Practicality meets comfort with a separate utility room, ground floor cloakroom, and underfloor heating throughout the ground level. A welcoming hallway with an oak and glass staircase sets a grand first impression.



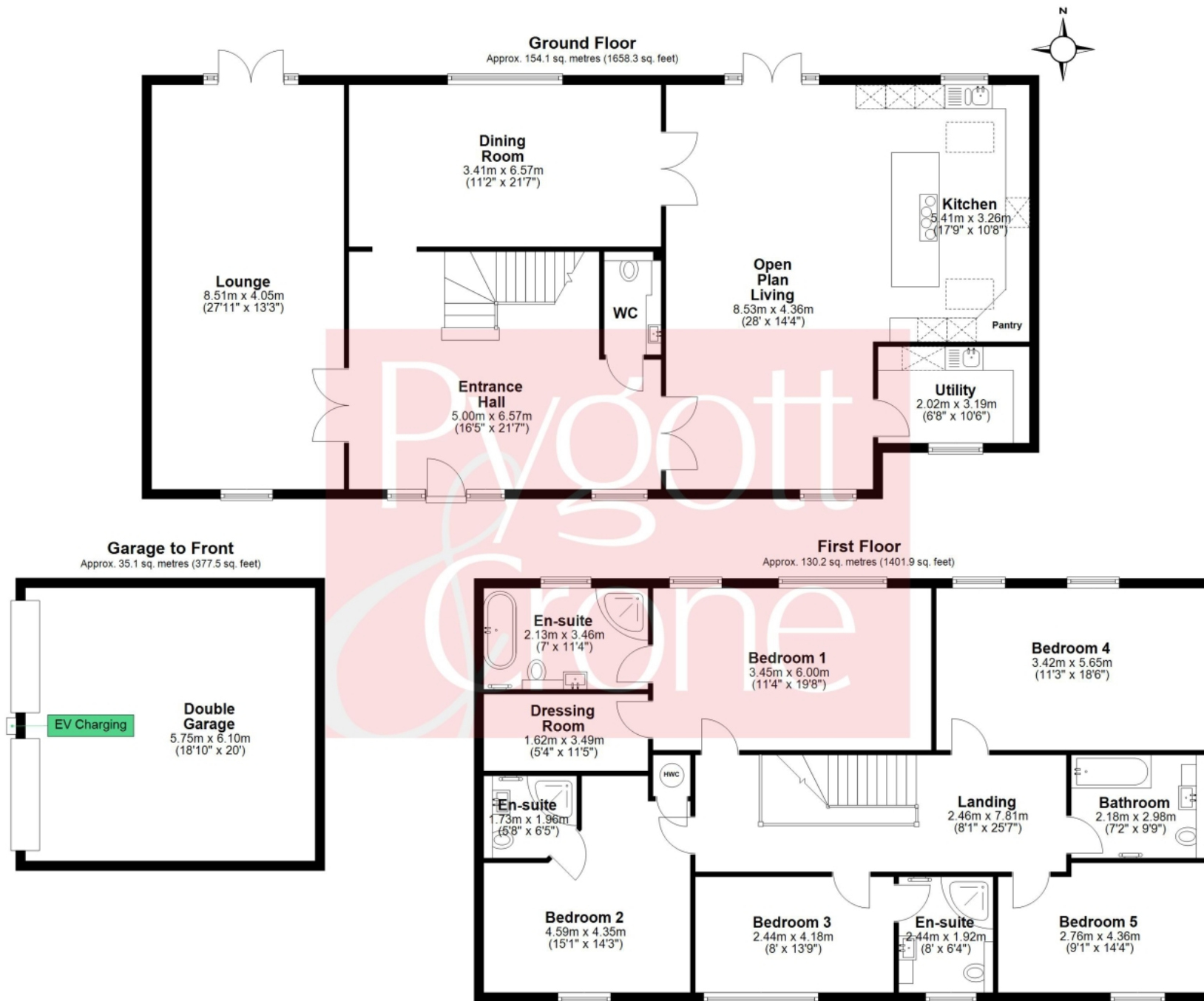
Upstairs, five well-proportioned double bedrooms provide plenty of space for growing families or guests. The luxurious principal suite boasts a walk-in wardrobe, private ensuite with both bath and shower, and a separate dressing room. A second bedroom also features its own ensuite, while the remaining bedrooms are served by a spacious family bathroom. Outside, the home enjoys landscaped front and rear gardens, a double garage with electric doors, EV charging point, and LPG central heating with zoned temperature control.

An exclusive brand new development of only five bespoke homes nestled within this North Nottinghamshire village of South Leverton. These unique homes offer generous sizes rooms & living spaces and come fully fitted to a luxury specification with many features fitted as standard, with the use of quality materials for fixtures & fittings. With only 3 homes left available, these contemporary designed homes are built and ready to move in and are located within a beautiful village setting near open countryside.

Viewings are accompanied by Pygott & Crone.







Total area: approx. 319.4 sq. metres (3437.7 sq. feet)

Floor plan created by Matte Black Media.
Plan produced using PlanUp.



Location



Show on Google: [schools](#), [doctors](#), [supermarkets](#), [restaurants](#), [railway stations](#)



Stonebow
Financial Services Ltd

Do you need Financial Help or Advice?

We are offering free advice through Mortgage Advice Bureau. If you would like to discuss your finances or mortgage, we'll arrange for a qualified adviser to call you back at a convenient time.



Bianca van Tonder
Mortgage & Protection Adviser

0330 912 0007

Your home may be repossessed if you do not keep up repayments on your mortgage.

There may be a fee for mortgage advice. The actual amount you pay will depend upon your circumstances. The fee is up to 1% but a typical fee is 0.3% of the amount borrowed.







Plot 5, Windmill Grove, South Leverton, Retford, Nottinghamshire, DN22 0GD



Plot 5, Windmill Grove, South Leverton, Retford, Nottinghamshire, DN22 0GD





Plot 5, Windmill Grove, South Leverton, Retford, Nottinghamshire, DN22 0GD

Houses. Homes. Harmony.



Plot 5, Windmill Grove, South Leverton
is on the market with our Lincoln branch

36a Silver Street, Lincoln LN2 1EW

01522 568822