



Plot 2, Windmill Grove

South Leverton, Retford, Nottinghamshire, DN22 0GD

£400,000

4 Bedroom Semi-Detached House

- Freehold
- Brand new luxury homes
- Just over 1,800sqft plus garage
- High specification finishes
- Contemporary designed living spaces
- Open countryside views
- Generous size living spaces
- Private development of only 5 homes
- Freehold
- EPC Rating - TBC, Council Tax Band - TBC



Overview

Welcome to this exceptional new-build home on Retford Road, nestled in the picturesque village of South Leverton, Retford.

This beautifully presented semi-detached property features four generous double bedrooms and three stylish bathrooms—ideal for a growing family or those who love to entertain. Set in a quiet neighbourhood, the home offers the perfect balance of peace and convenience, complete with a double garage for added practicality. Inside, you'll be impressed by the sleek, contemporary finishes and an abundance of natural light streaming through large windows. The open-plan design ensures a smooth, spacious flow between living areas—ideal for cozy evenings or hosting guests with ease. Step outside to enjoy your morning coffee in the private garden or gather loved ones for a summer barbecue in the expansive outdoor space. This home truly embraces modern indoor-outdoor living. Don't miss your chance to call this stunning property your own.



This beautifully designed home offers spacious and versatile living throughout. Upon entering, you're welcomed by a stylish hallway with an oak staircase and handy understairs storage. A front-facing study provides the perfect space for a home office or playroom, while a cloakroom adds convenience. The heart of the home is the open-plan kitchen/diner, featuring sleek dark blue cabinetry, integrated appliances, and contemporary white worktops with a breakfast bar. French doors lead out to the rear garden, creating a seamless flow for indoor-outdoor living. A separate utility room keeps household tasks tucked away, and the generous lounge offers a comfortable retreat with French doors opening onto the patio and lawn.



Upstairs, the landing is filled with natural light from a striking triple window. The spacious principal bedroom enjoys peaceful rear views and includes a modern ensuite with quality finishes. A second double bedroom also benefits from its own ensuite, while two further doubles share a well-appointed family bathroom complete with bath, overhead shower, and a large feature mirror. With stylish fixtures, ample light, and thoughtful design throughout, this home perfectly balances practicality with contemporary comfort.

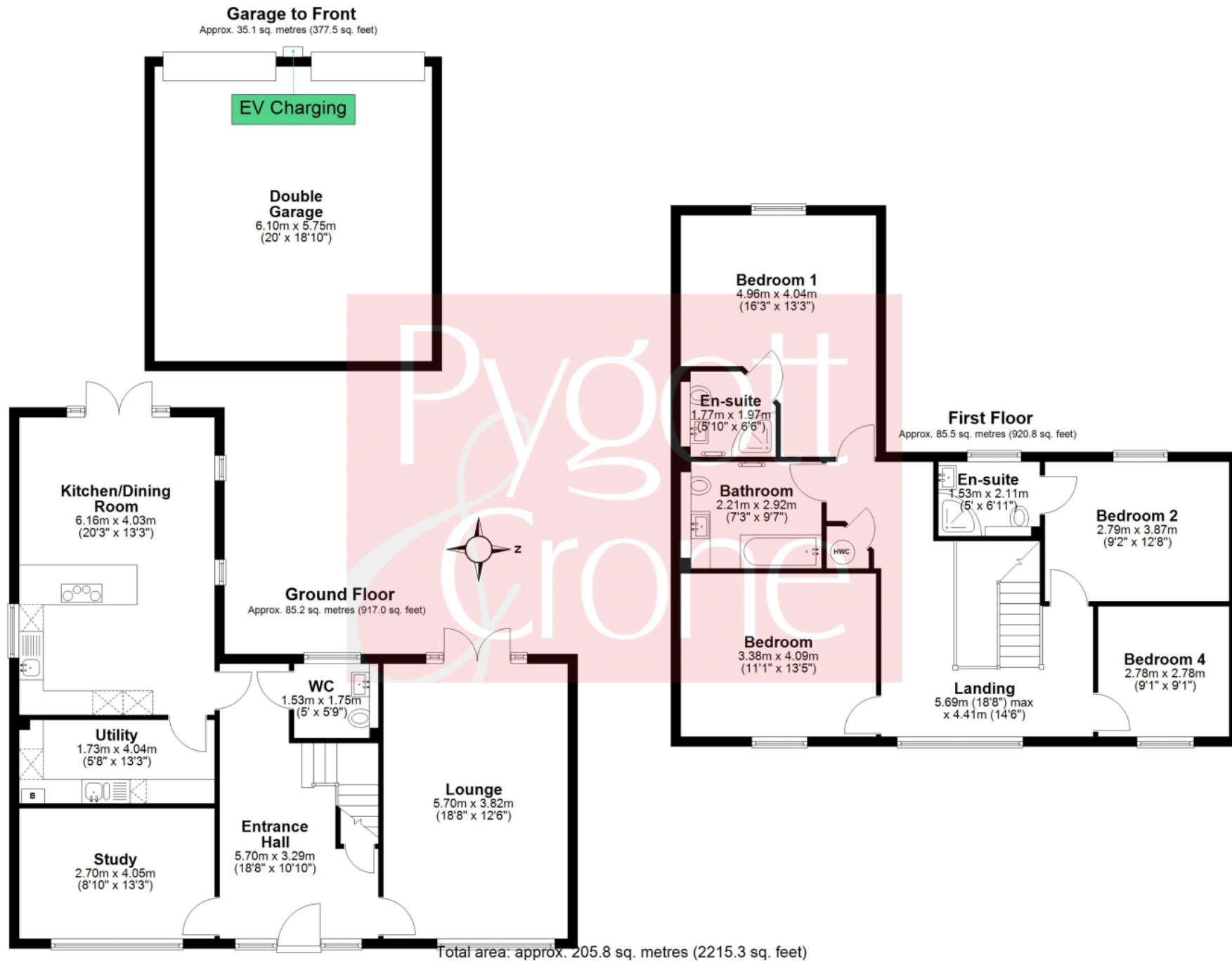
Key features: LPG heating with under floor heating to the ground floor, double garage, integrated appliances to the kitchen.

Viewings are a must to fully appreciate and are accompanied by Pygott & Crone.

An exclusive brand new development of only five bespoke homes nestled within this North Nottinghamshire village of South Leverton. These unique homes offer generous sized rooms & living spaces and come fully fitted to a luxury specification with many features fitted as standard, with the use of quality materials for fixtures & fittings. With only 3 homes left available, these contemporary designed homes are built and ready to move in and are located within a beautiful village setting near open countryside.







Floor plan created by Matte Black Media.
Plan produced using PlanUp.



Location



Show on Google: [schools](#), [doctors](#), [supermarkets](#), [restaurants](#), [railway stations](#)



Stonebow
Financial Services Ltd

Do you need Financial Help or Advice?

We are offering free advice through Mortgage Advice Bureau. If you would like to discuss your finances or mortgage, we'll arrange for a qualified adviser to call you back at a convenient time.



Bianca van Tonder
Mortgage & Protection Adviser

0330 912 0007

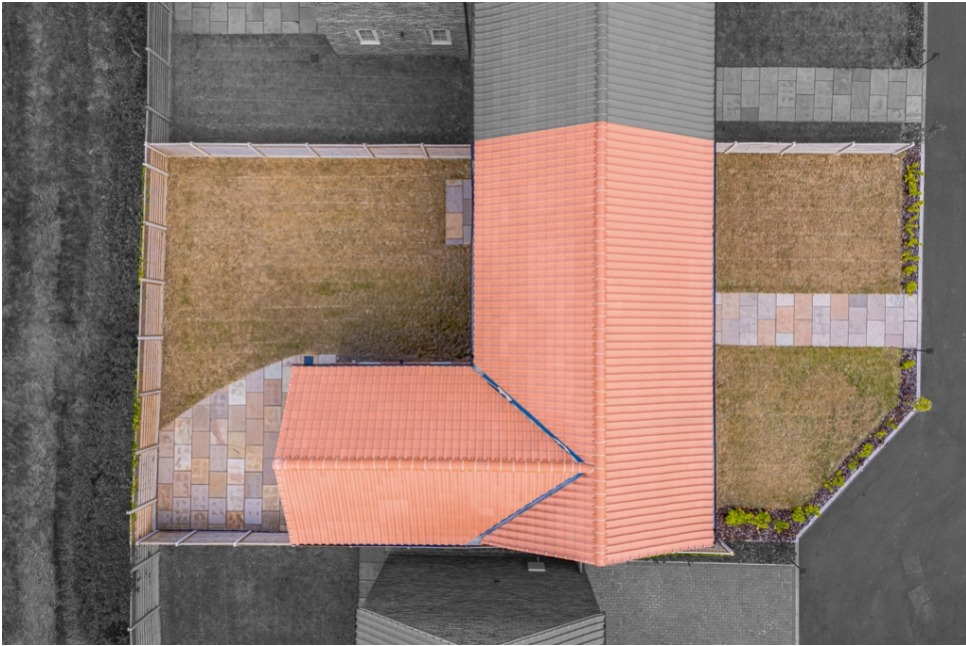
Your home may be repossessed if you do not keep up repayments on your mortgage.

There may be a fee for mortgage advice. The actual amount you pay will depend upon your circumstances. The fee is up to 1% but a typical fee is 0.3% of the amount borrowed.





Plot 2, Windmill Grove, South Leverton, Retford, Nottinghamshire, DN22 0GD





Pygott & Crone

Platinum Trusted Service Award
★★★★★
2021 feefo

Book your free, property valuation.

- 24/7 Customer Service
- £0 Upfront Fees to Pay
- On average, 98% of asking price achieved

Pygott Plus+

YOUR PERSONAL PROPERTY JOURNEY

- + Register your buyer's criteria
- + Access online viewings
- + Access property documents
- + Available 24/7 wherever you are
- + Easy to activate, easy to use



Houses. Homes. Harmony.



Plot 2, Windmill Grove, South Leverton
is on the market with our Lincoln branch

36a Silver Street, Lincoln LN2 1EW

01522 568822