



Cherry Trees, 24 High Street
Walcott, Lincoln, Lincolnshire, LN4 3SN

£350,000

3 Bedroom Detached Bungalow

- Generous plot in popular village
- Particularly well maintained & presented
- Versatile accommodation some 1646 sqft
- 3 double bedrooms all with built in wardrobes
- Lounge & conservatory
- Integral garage with electric door
- West facing rear garden with open views
- EPC Rating - D, Council Tax Band - D

[Click here to access the Energy Performance Certificate for Cherry Trees, 24 High Street, Walcott, Lincoln, Lincolnshire, LN4 3SN](#)



Overview

Offered for sale with no onward chain is this individual detached bungalow enjoying a generous plot in this small but popular village. A key feature are the West facing rear garden with views over surrounding countryside. The property which is particularly well maintained and presented has never been offered for sale before and in the agents opinion is an excellent opportunity of which viewing is highly recommended to fully appreciate.

The spacious and versatile accommodation extends to some 1646 sqft. It briefly comprises covered entrance porch, reception hall, cloakroom, dual aspect lounge with open fireplace and doors to the glass roofed conservatory, dining kitchen and utility room. In addition are three double bedrooms all with built in wardrobes, an en suite shower room and main bathroom with both bath and separate shower. The property also features oil fired central heating with a new boiler in 2023 and uPVC double glazing.

Outside a block paved driveway and turning head leads to the integral garage with electric roller door. The property is set well back from the road with front gardens including lawn together with a selection of shrubs. The main garden is to the rear and as already commented a particular feature of the property being west facing with open views. It includes lawn with a variety of shrubs and trees.





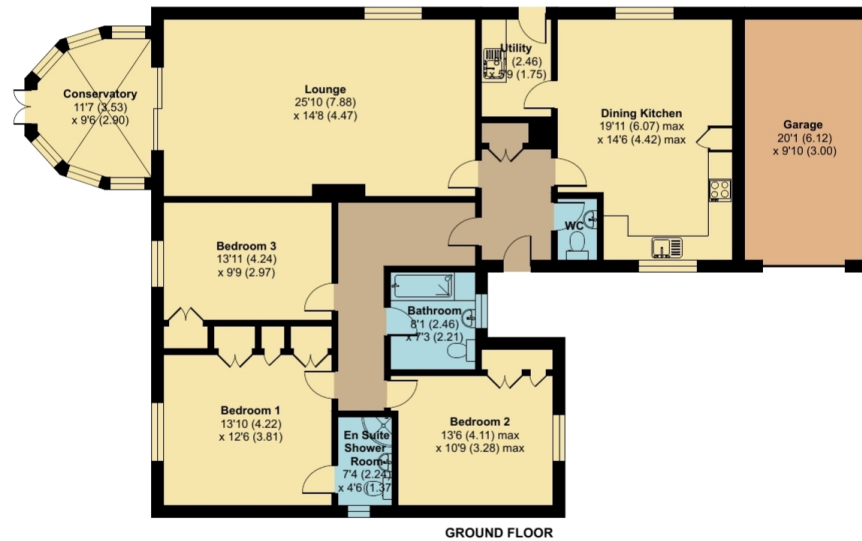
High Street, Walcott, Lincoln, LN4

Approximate Area = 1646 sq ft / 153 sq m

Garage = 193 sq ft / 18 sq m

Total = 1839 sq ft / 171 sq m

For identification only - Not to scale



Floor plan produced in accordance with RICS Property Measurement 2nd Edition, Incorporating International Property Measurement Standards (IPMS2 Residential). © nrichcom 2025. Produced for Pygott & Crone. REF: 1335773



Location



Show on Google: [schools](#), [doctors](#), [supermarkets](#), [restaurants](#), [railway stations](#)



Stonebow
Financial Services Ltd

Do you need Financial Help or Advice?

We are offering free advice through Mortgage Advice Bureau. If you would like to discuss your finances or mortgage, we'll arrange for a qualified adviser to call you back at a convenient time.



Mark Cox
Mortgage & Protection Adviser

0330 912 0007

Your home may be repossessed if you do not keep up repayments on your mortgage.

There may be a fee for mortgage advice. The actual amount you pay will depend upon your circumstances. The fee is up to 1% but a typical fee is 0.3% of the amount borrowed.







Cherry Trees, 24 High Street, Walcott, Lincoln, Lincolnshire, LN4 3SN

Houses. Homes. Harmony.



Cherry Trees, 24 High Street, Walcott
is on the market with our Sleaford branch

19 Southgate, Sleaford NG34 7SU

01529 414333