



8 Poplar Farm Court
Nettleham, Lincoln, Lincolnshire, LN2 2BP

£695,000

4 Bedroom Detached House

- Freehold
- Unique barn conversion
- 4 bedrooms (two en-suite)
- 3 reception rooms
- Open-plan living / kitchen area
- Family bathroom
- Downstairs cloakroom
- Double garage with additional workshop / store
- EPC Rating - C, Council Tax Band - F

[Click here to access the Energy Performance Certificate for 8 Poplar Farm Court, Nettleham, Lincoln, Lincolnshire, LN2 2BP](#)



Overview

Situated in the heart of the village of Nettleham, this detached barn conversion is the perfect opportunity for those looking for a unique property. The accommodation offers a blend of contemporary design and comfortable living, making it an ideal choice for those seeking a spacious and well proportioned family home.

This well-presented home offers flexible living accommodation to suit different buyers' needs with three reception rooms, four bedrooms (two en-suite), a family bathroom and lovely period features - a large part of the barn dates back to 1723.

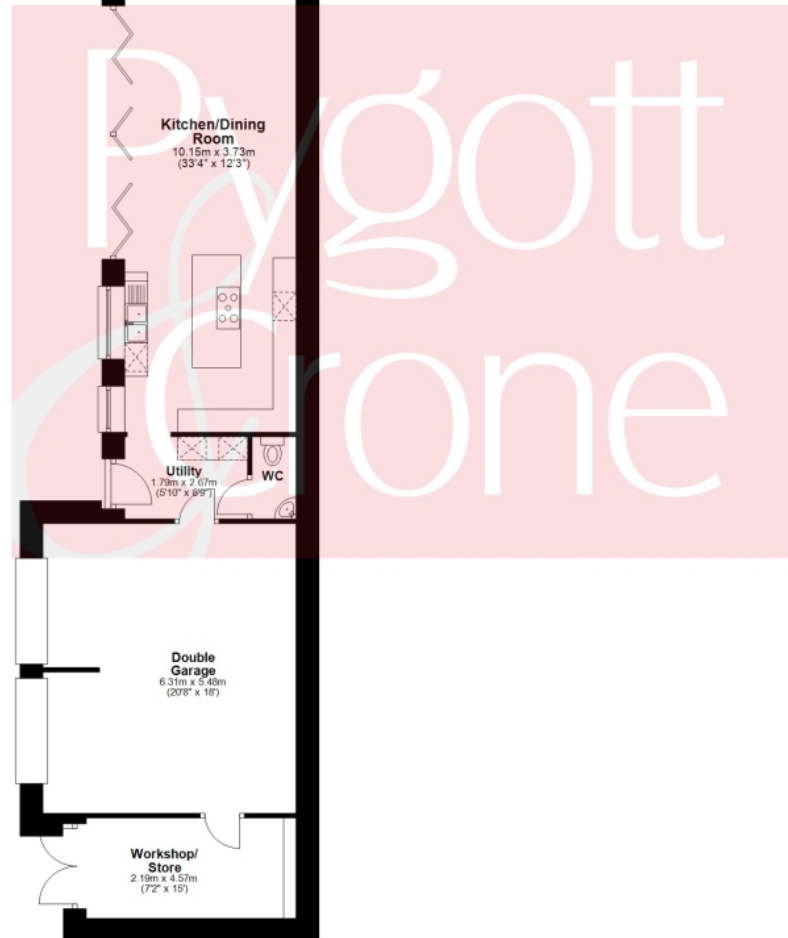
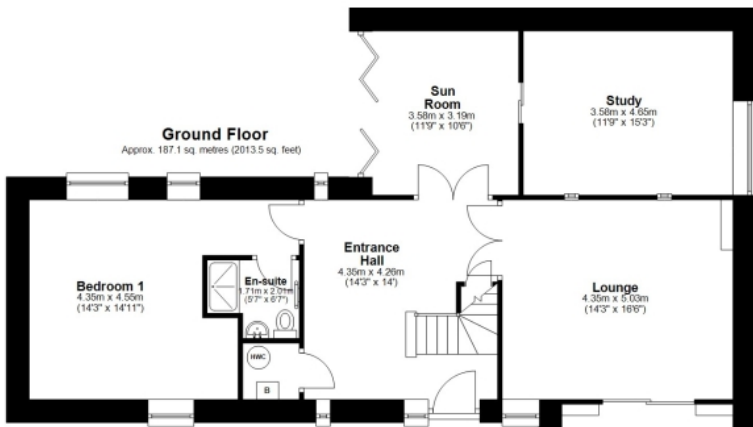
Externally, the property is approached via a gated driveway leading to a double garage and an attached workshop / store. The easily maintained garden is a combination of lawned areas, raised beds and paving providing access around the premises.

Nettleham is a popular village in Lincolnshire and offers a number of amenities, including a Post Office within the Co-op food store, GP surgery, library, public houses, plus both infant and junior schools. The village has regular bus services to Lincoln city centre, the county Hospital and other surrounding areas.

Agents Note: The property is accessed via a shared road.







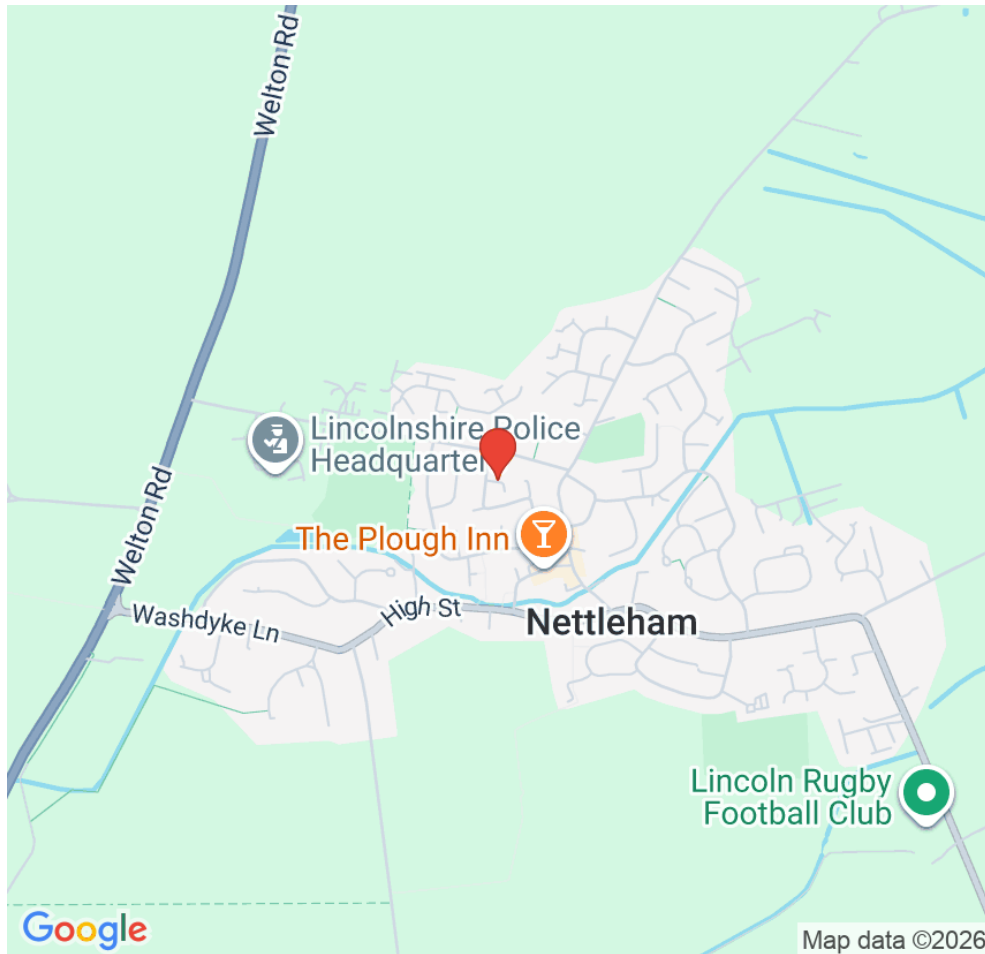
Total area: approx. 254.1 sq. metres (2735.2 sq. feet)

Floor plan created by Matis Black Media
Plan produced using FloorUp





Location



Show on Google: [schools](#), [doctors](#), [supermarkets](#), [restaurants](#), [railway stations](#)



Stonebow
Financial Services Ltd

Do you need Financial Help or Advice?

We are offering free advice through Mortgage Advice Bureau. If you would like to discuss your finances or mortgage, we'll arrange for a qualified adviser to call you back at a convenient time.



Bianca van Tonder
Mortgage & Protection Adviser

0330 912 0007

Your home may be repossessed if you do not keep up repayments on your mortgage.

There may be a fee for mortgage advice. The actual amount you pay will depend upon your circumstances. The fee is up to 1% but a typical fee is 0.3% of the amount borrowed.









Houses. Homes. Harmony.



8 Poplar Farm Court, Nettleham
is on the market with our Lincoln branch

36a Silver Street, Lincoln LN2 1EW

01522 568822