



Pygott
& Crone
FOR SALE
0800 9177 404

Pygott
& Crone

69 Malton Road
North Hykeham, Lincoln, Lincolnshire, LN6 8HZ

£215,000

3 Bedroom Semi-Detached House

- Freehold
- No Onward Chain
- Semi Detached Home
- 3 Bedrooms
- Lounge & Dining Room
- Well Kept Front & Rear Gardens
- Highly Sought After Location
- EPC Rating - C, Council Tax Band - B

[Click here to access the Energy Performance Certificate for 69 Malton Road, North Hykeham, Lincoln, Lincolnshire, LN6 8HZ](#)



Overview

Pygott & Crone are delighted to offer this well presented three bedroom semi detached property ideally positioned for the amenities and schools within the ever popular North Hykeham.

Internally the accommodation briefly comprises of an Entrance Hall, Fitted Kitchen, Dining Room, Lounge, Conservatory, First Floor Landing, Three Bedrooms and Shower Room.

Externally, the property benefits from driveway parking leading to Detached Garage & Workshop, and a fully enclosed rear garden which is predominately laid to lawn.

North Hykeham is a popular area which is located South West of the City of Lincoln. The property is close to a wide variety of amenities including schooling of all grades, Doctors' Surgery, the Forum Shopping Centre, ASDA superstore, public houses and train station. There is easy access to the A46 bypass which in turn gives access to the A1 and the Mainline Train Station at Newark.

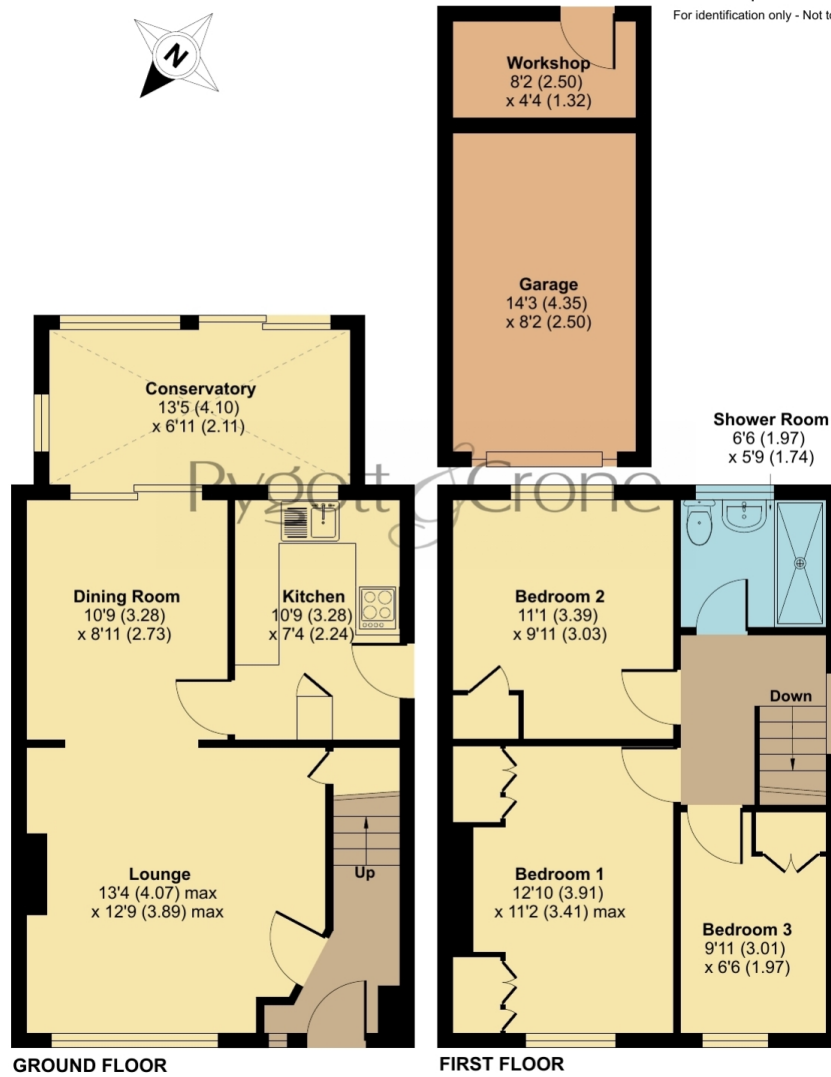




Malton Road, North Hykeham, Lincoln, LN6

Approximate Area = 897 sq ft / 83.3 sq m
Garage = 117 sq ft / 10.8 sq m
Workshop = 36 sq ft / 3.3 sq m
Total = 1050 sq ft / 97.4 sq m

For identification only - Not to scale



Floor plan produced in accordance with RICS Property Measurement 2nd Edition, Incorporating International Property Measurement Standards (IPMS2 Residential). © nchecom 2025. Produced for Pygott & Crone. REF: 1253536



Location



Show on Google: [schools](#), [doctors](#), [supermarkets](#), [restaurants](#), [railway stations](#)



Stonebow
Financial Services Ltd

Do you need Financial Help or Advice?

We are offering free advice through Mortgage Advice Bureau. If you would like to discuss your finances or mortgage, we'll arrange for a qualified adviser to call you back at a convenient time.



Bianca van Tonder
Mortgage & Protection Adviser

0330 912 0007

Your home may be repossessed if you do not keep up repayments on your mortgage.

There may be a fee for mortgage advice. The actual amount you pay will depend upon your circumstances. The fee is up to 1% but a typical fee is 0.3% of the amount borrowed.





Houses. Homes. Harmony.



69 Malton Road, North Hykeham
is on the market with our Lincoln branch

36a Silver Street, Lincoln LN2 1EW

01522 568822