



Pygott  
& Crone

2 Hervey Road  
Sleaford, Lincolnshire, NG34 7LT

£575,000

## 6 Bedroom Detached House

- Freehold
- Detached 6 bedroom family home immaculately presented
- Self-contained annexe with lounge, kitchen and en suite to bedroom
- County kitchen with extensive units with space for dining
- 6 bedrooms (5 to fit king size beds) including 2 with en suites
- Large snug ideal as family room and dual aspect dining room
- Landscaped rear garden with multiple seating areas
- Garden room overlooking the rear garden with French doors
- Gravel driveway for 4/5 cars, convenient location for Sleaford town centre
- EPC Rating - C, Council Tax Band - F

[Click here to access the Energy Performance Certificate for 2 Hervey Road, Sleaford, Lincolnshire, NG34 7LT](#)



## Overview

Pygott and Crone are pleased to offer for sale this immaculately presented property located on Hervey Road Sleaford, the property offers very flexible accommodation with the benefit of a self-contained annexe. The property has a cottage style character feel with the Range in the Kitchen.

Built to a high standard and having been maintained to a very high standard the property offers accommodation comprising Entrance Hall, Breakfast Kitchen, Dining Room, Sitting Room, Garden Room, in addition on the ground floor is a well planned annexe comprising of ground floor Bedroom with Ensuite Shower Room, Kitchen/Utility Room, Lounge/Dining Area. The first-floor benefits from five further Bedrooms, with Ensuites to two and a Family Bathroom.

Outside the property provides ample parking to the front, to the rear is an enclosed landscaped garden with patio areas, lawn and mature borders providing a private setting for entertaining.

Hervey Road is a very sought after location with easy access to Sleaford's town centre and all amenities.

Internal viewing is highly recommended to appreciate the quality and flexibility this property offers.

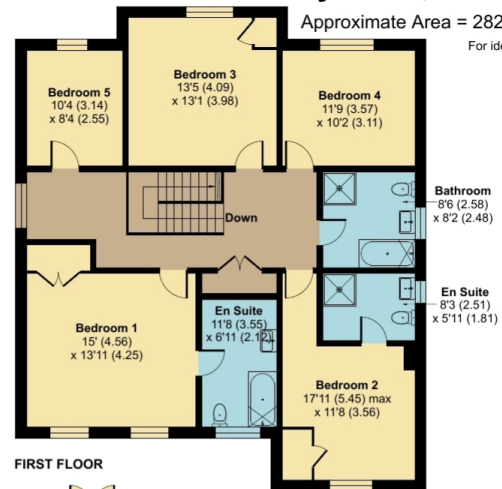




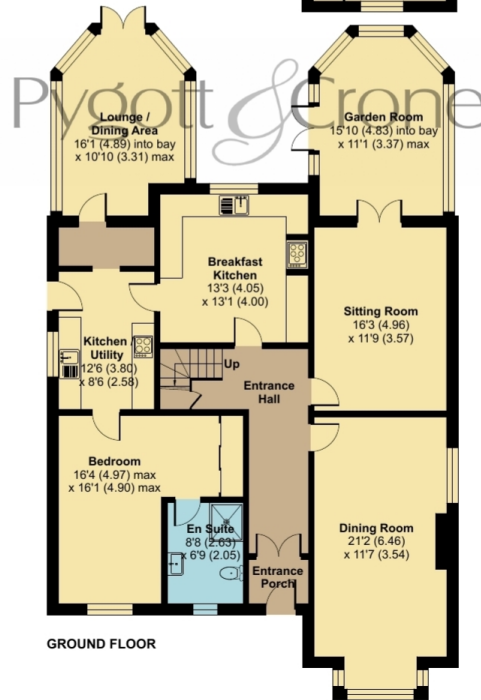
# Hervey Road, Sleaford, NG34

Approximate Area = 2827 sq ft / 262.6 sq m

For identification only - Not to scale



FIRST FLOOR



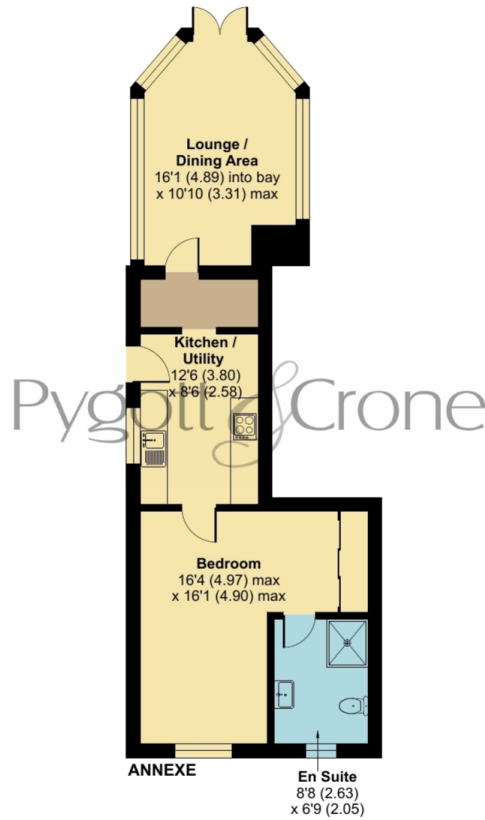
GROUND FLOOR

Floor plan produced in accordance with RICS Property Measurement 2nd Edition, Incorporating International Property Measurement Standards (IPMS2 Residential). © nitchcom 2026. Produced for Pygott & Crone. REF: 1429798

# Hervey Road, Sleaford, NG34

Annexe = 581 sq ft / 53.9 sq m

For identification only - Not to scale



 Floor plan produced in accordance with RICS Property Measurement 2nd Edition, Incorporating International Property Measurement Standards (IPMS2 Residential). © nrichcom 2026. Produced for Pygott & Crone. REF: 1429798



## Location



Show on Google: [schools](#), [doctors](#), [supermarkets](#), [restaurants](#), [railway stations](#)



**Stonebow**  
Financial Services Ltd

### Do you need Financial Help or Advice?

We are offering free advice through Mortgage Advice Bureau. If you would like to discuss your finances or mortgage, we'll arrange for a qualified adviser to call you back at a convenient time.



Ahmed Jilil  
Financial Services Director

0330 912 0007

Your home may be repossessed if you do not keep up repayments on your mortgage.

There may be a fee for mortgage advice. The actual amount you pay will depend upon your circumstances. The fee is up to 1% but a typical fee is 0.3% of the amount borrowed.











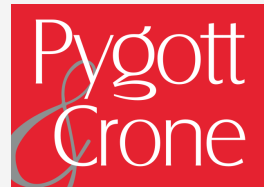








Houses. Homes. Harmony.



2 Hervey Road, Sleaford  
is on the market with our Sleaford branch

---

19 Southgate, Sleaford NG34 7SU

01529 414333