



1 Victory Way  
Sleaford, Lincolnshire, NG34 7XL

£425,000

## 4 Bedroom Detached House

- Freehold
- Recently updated to exceptional standard
- Generous accommodation some 1296 sqft
- Re fitted kitchen & bathrooms
- Double garage & driveway
- Generous, landscaped, rear garden
- Gas central heating, uPVC double glazing
- Popular residential location
- Bedroom 1 has vaulted ceiling & Juliet balcony
- EPC Rating - C, Council Tax Band - D

[Click here to access the Energy Performance Certificate for 1 Victory Way, Sleaford, Lincolnshire, NG34 7XL](#)



## Overview

Recently updated to an exceptional standard this modern detached family home enjoys a generous corner plot on this popular residential development built by Bryant Homes.

It is conveniently located for St Botolphs primary school. The generous accommodation is immaculately presented and features gas fired central heating and uPVC double glazing.

Further improvements include extra wide doorways with oak doors, re fitted kitchen with built in Neff appliances, re fitted quality bathroom fittings to both main and en suite.

Extending to some 1296 sqft it includes reception hall, cloakroom, 19ft lounge, dining/family room, dining/kitchen, utility, four double bedrooms all with built in wardrobes, en suite shower and bathroom. The main bedroom features a vaulted ceiling and Juliet balcony.

Outside are good size, landscaped rear gardens together with driveway and detached double garage. A superb home of which viewing is a must to fully appreciate.

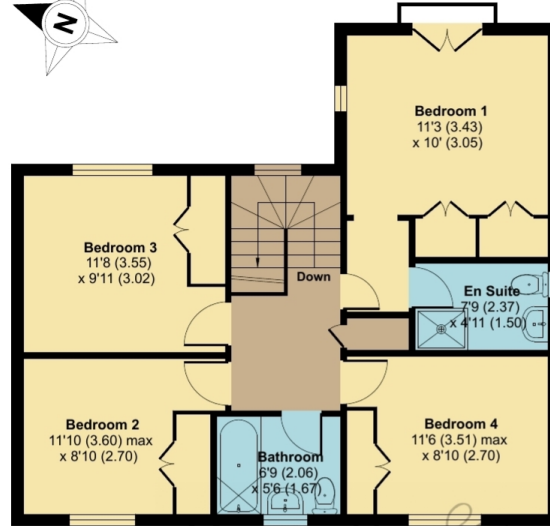




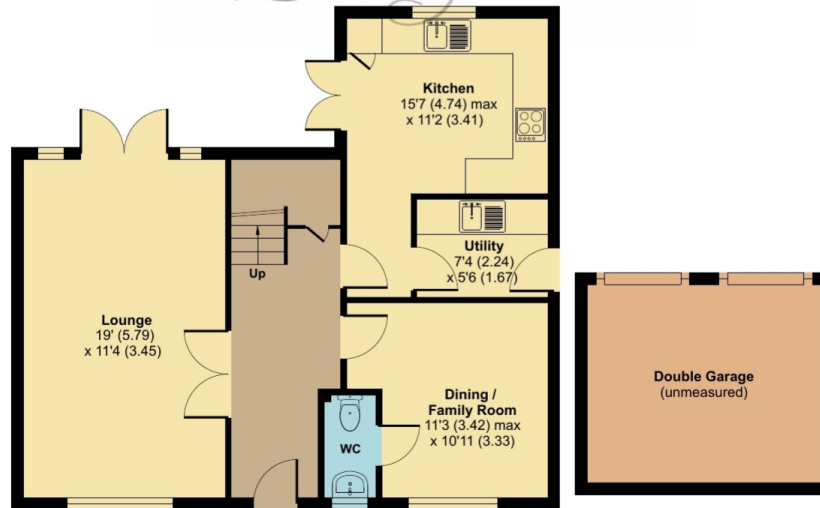
# Victory Way, Sleaford, NG34

Approximate Area = 1296 sq ft / 120.4 sq m (excludes garage)

For identification only - Not to scale



FIRST FLOOR



GROUND FLOOR

Floor plan produced in accordance with RICS Property Measurement 2nd Edition, Incorporating International Property Measurement Standards (IPMS2 Residential). © nrichcom 2025. Produced for Pygott & Crone. REF: 1302253



## Location



Show on Google: [schools](#), [doctors](#), [supermarkets](#), [restaurants](#), [railway stations](#)



**Stonebow**  
Financial Services Ltd

### Do you need Financial Help or Advice?

We are offering free advice through Mortgage Advice Bureau. If you would like to discuss your finances or mortgage, we'll arrange for a qualified adviser to call you back at a convenient time.



**Ahmed Jilil**  
Financial Services Director

0330 912 0007

Your home may be repossessed if you do not keep up repayments on your mortgage.

There may be a fee for mortgage advice. The actual amount you pay will depend upon your circumstances. The fee is up to 1% but a typical fee is 0.3% of the amount borrowed.







Houses. Homes. Harmony.



**1 Victory Way, Sleaford**  
is on the market with our Sleaford branch

---

19 Southgate, Sleaford NG34 7SU

01529 414333