



Plot 5, The Waring, The Parklands
4 Upper Walk Close, Sudbrooke, Lincoln, LN2 2ZE

£450,000

4 Bedroom Detached House

- Freehold
- Exclusive New Development
- 4 Bedroom Home
- Lounge/Dining, Kitchen
- En Suite & Bathroom
- Picturesque communal gardens
- High Spec Kitchens & Bathrooms
- Gas CH & Modern Appliances B
- Traditional Design Contemporary Lifestyle
- EPC Rating - B, Council Tax Band - E

[Click here to access the Energy Performance Certificate for Plot 5, The Waring, The Parklands, 4 Upper Walk Close, Sudbrooke, Lincoln, LN2 2ZE](#)



Overview

THE WARING: A Four Bedroom Detached House with Double Garage. Internally the accommodation comprises Entrance Hall, Study, large Lounge/Dining room, Kitchen with Utility and WC off. To the first floor there are 4 Bedrooms with En Suite Shower to Main Bedroom and Family Bathroom.



The Parklands Sudbrooke is an exciting new development, nestled within a beautiful woodland surrounding approximately 7 miles from Lincoln City Centre. 24 stylish house types blend with perfect harmony into the beautiful natural environment, everything from thatched cottages to spacious family homes. This unique and wonderfully diverse development is planned to create a community for all to enjoy. The wooded areas are immaculately cared for, making for picturesque walks, rambles with the family and more energetic jogs. The development's centrepiece is an independent pub and restaurant, acting as a central hub for residents and visitors to come together.

At Parklands, you can choose from a range of two to five-bedroom freehold house types, offering everything from a cosy cottage to a spacious family home. Each home offers well thought traditional design and consideration for the contemporary lifestyle with gas central heating, fibre optic broadband and modern appliances. A prestigious residential development that's been designed with careful thought and creativity.

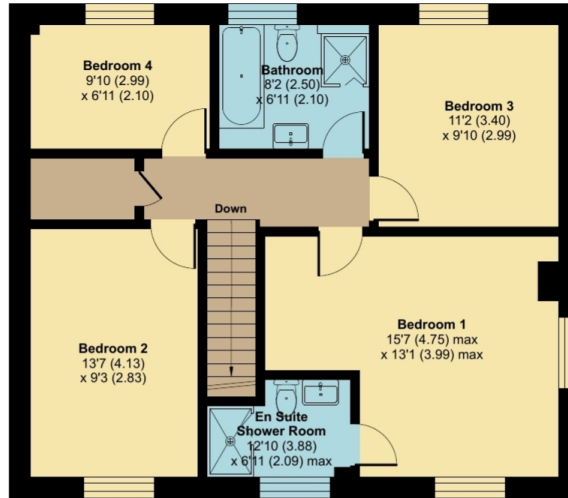
Agents Note:- The Parklands development benefits from the communal areas and ground maintained for all residents, each property will have a 2025 Management fee circa £415 per annum.



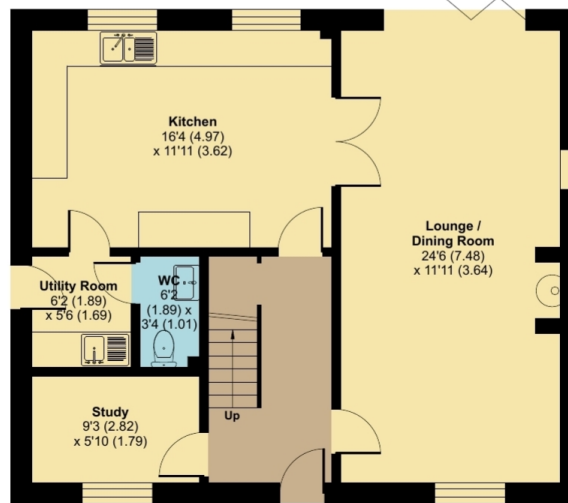


The Parklands, Sudbrooke, Lincoln, LN2

For identification only - Not to scale



FIRST FLOOR



GROUND FLOOR



This floor plan was constructed using measurements provided to © nlichecom 2024 by a third party. Produced for Pygott & Crone. REF: 1091492



Green mortgages

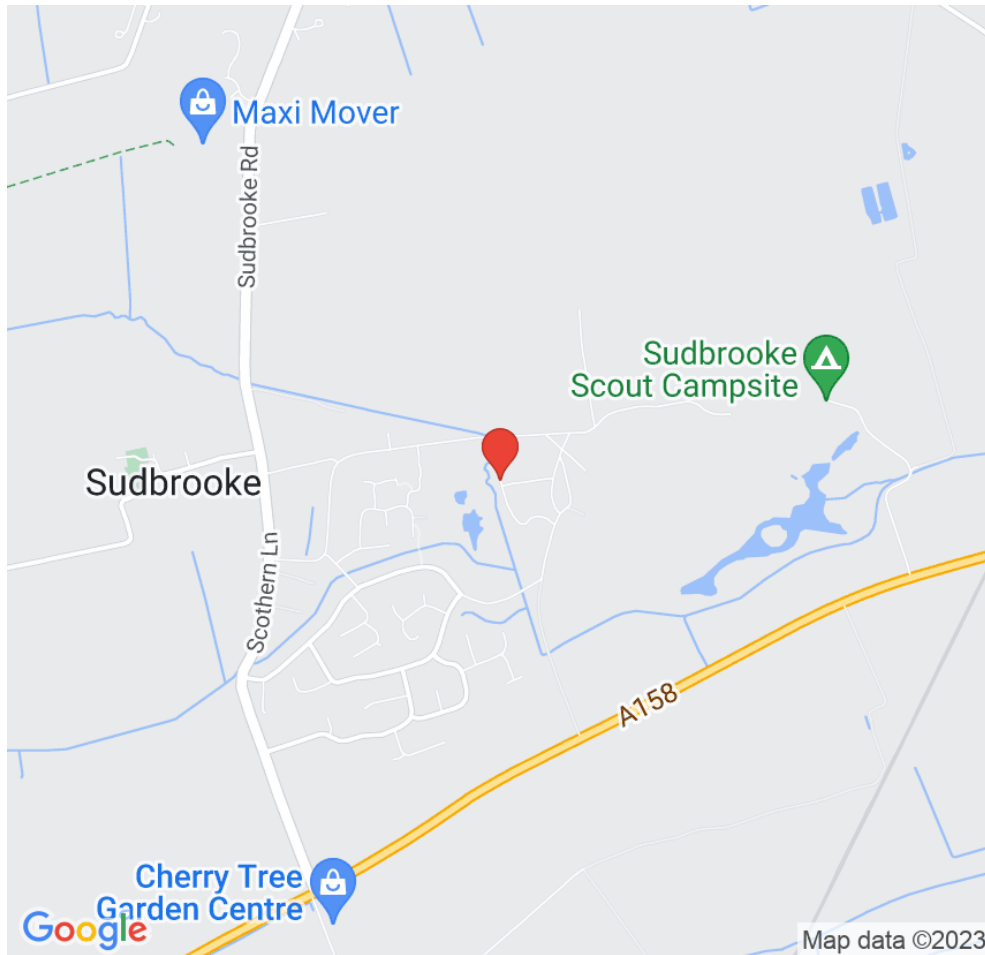
Access to lenders offering exclusive rates and cash back incentives on energy efficient homes



Your home may be repossessed if you do not keep up repayments on your mortgage. A fee of up to 1% of the mortgage amount may be charged depending on individual circumstances. A typical fee is £520.



Location



Show on Google: [schools](#), [doctors](#), [supermarkets](#), [restaurants](#), [railway stations](#)



Stonebow
Financial Services Ltd

Do you need Financial Help or Advice?

We are offering free advice through Mortgage Advice Bureau. If you would like to discuss your finances or mortgage, we'll arrange for a qualified adviser to call you back at a convenient time.



Bianca van Tonder
Mortgage & Protection Adviser

0330 912 0007

Your home may be repossessed if you do not keep up repayments on your mortgage.

There may be a fee for mortgage advice. The actual amount you pay will depend upon your circumstances. The fee is up to 1% but a typical fee is 0.3% of the amount borrowed.

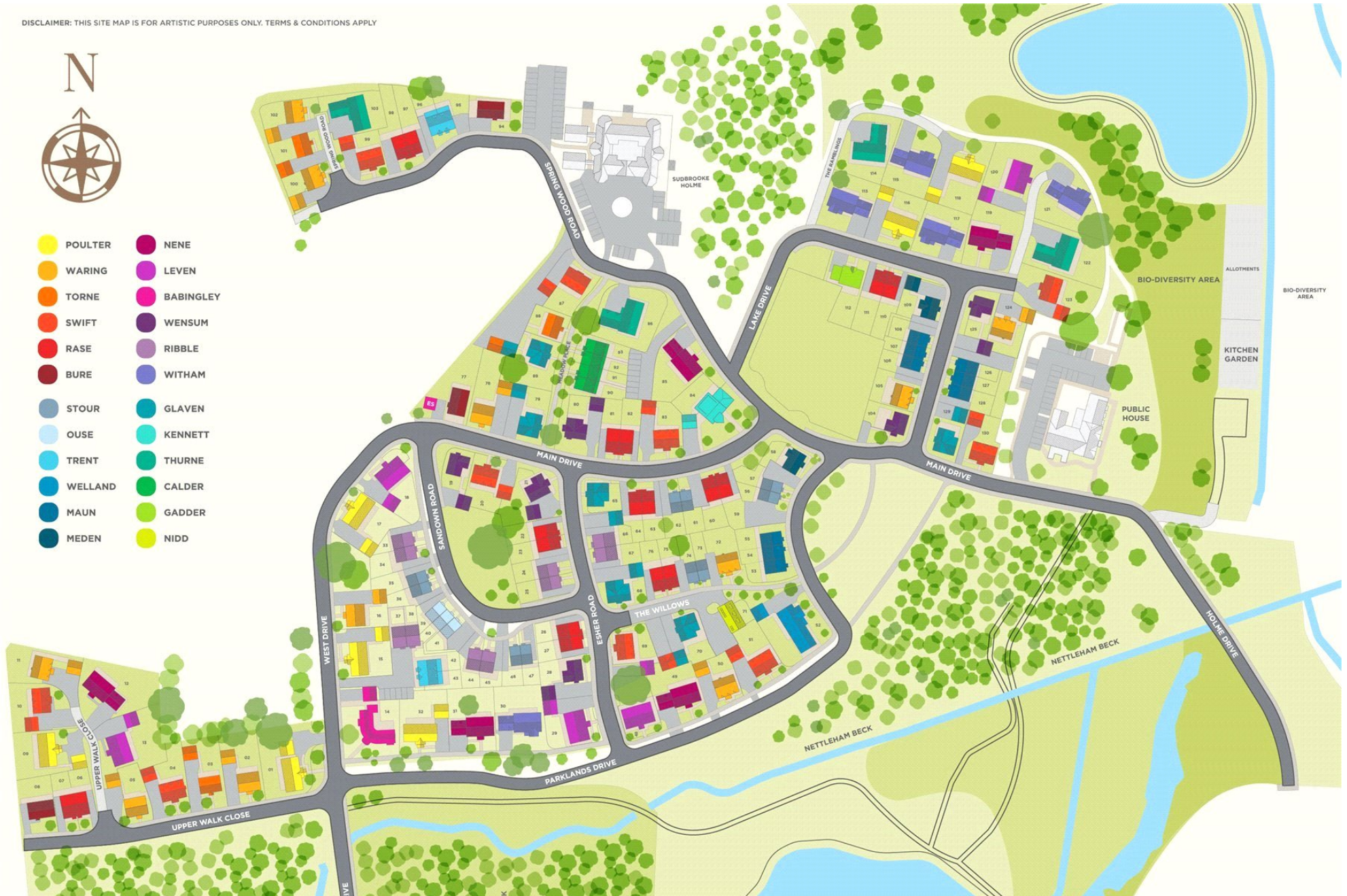


Plot 5, The Waring, The Parklands, 4 Upper Walk Close, Sudbrooke, Lincoln, LN2 2ZE



Plot 5, The Waring, The Parklands, 4 Upper Walk Close, Sudbrooke, Lincoln, LN2 2ZE

DISCLAIMER: THIS SITE MAP IS FOR ARTISTIC PURPOSES ONLY. TERMS & CONDITIONS APPLY



Plot 5, The Waring, The Parklands, 4 Upper Walk Close, Sudbrooke, Lincoln, LN2 2ZE

Houses. Homes. Harmony.



Plot 5, The Waring, The Parklands, 4 Upper Walk Close
is on the market with our Lincoln branch

36a Silver Street, Lincoln LN2 1EW

01522 568822