



Pygott
& Crone

81 Montrose Grove
Greylees, Sleaford, NG34 8GT

£23,750

1 Bedroom Apartment

- Leasehold
- 25% Shared Ownership
- First Floor Apartment
- Allocated Parking
- Shower Room With Double Shower
- Open Plan Living / Bedroom Area
- Kitchen with modern fitted units
- No Onward Chain
- Gas Central Heating & uPVC Double Glazing
- EPC Rating - C, Council Tax Band - A

[Click here to access the Energy Performance Certificate for 81 Montrose Grove, Greylees, Sleaford, NG34 8GT](#)



Overview

25% SHARED OWNERSHIP FIRST FLOOR APARTMENT WITH DUAL ASPECT OPEN PLAN LIVING / BEDROOM, ALLOCATED PARKING SPACE AND OFFERED FOR SALE WITH NO ONWARD CHAIN. This modern first floor apartment on the popular Greylees Development is an ideal opportunity to purchase a low maintenance home suitable for a number of different buyers. The accommodation has gas central heating and UPVC double glazing. It briefly comprises; Communal Hall and Staircase, Entrance Hall with Utility Cupboard, Open Plan Living / Bedroom, Kitchen with modern fitted units and built in appliances, Shower Room with double shower. The Property is held on a leasehold interest. A management charge of £72.09 per month is payable. This includes service charge £59.94, Insurance £2.75, management fee £9.40 and are subject to review.

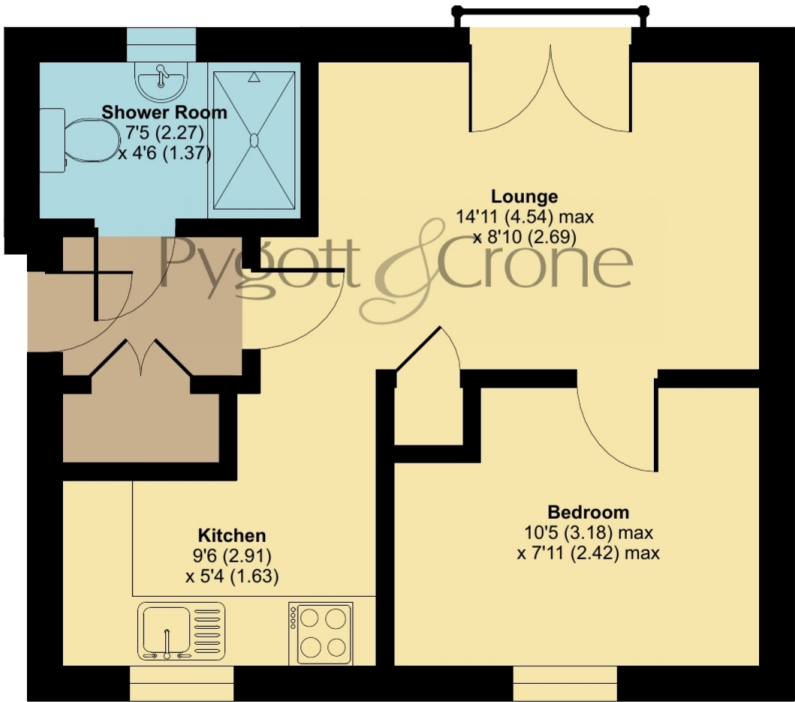




Montrose Grove, NG34

Approximate Area = 349 sq ft / 32.4 sq m

For identification only - Not to scale



FIRST FLOOR

Floor plan produced in accordance with RICS Property Measurement 2nd Edition, Incorporating International Property Measurement Standards (IPMS2 Residential). © nctechcom 2025. Produced for Pygott & Crone. REF: 1241238



Location



Show on Google: [schools](#), [doctors](#), [supermarkets](#), [restaurants](#), [railway stations](#)



Stonebow
Financial Services Ltd

Do you need Financial Help or Advice?

We are offering free advice through Mortgage Advice Bureau. If you would like to discuss your finances or mortgage, we'll arrange for a qualified adviser to call you back at a convenient time.



Ahmed Jilil
Financial Services Director

0330 912 0007

Your home may be repossessed if you do not keep up repayments on your mortgage.

There may be a fee for mortgage advice. The actual amount you pay will depend upon your circumstances. The fee is up to 1% but a typical fee is 0.3% of the amount borrowed.

Houses. Homes. Harmony.



81 Montrose Grove, Greylees
is on the market with our Sleaford branch

19 Southgate, Sleaford NG34 7SU

01529 414333